

## For C1BA and C2BA Cased Coil Models

# Installation Instructions

## C1 to C3 Conversion Kits For Horizontal Left or Right Applications (B & C Width Only)

### DESCRIPTION

These instructions are primarily intended to assist qualified individuals in the proper installation of this appliance. Some local codes require licensed installation/service personnel for this type of equipment. Read all instructions carefully before starting the installation.

### INTRODUCTION

This kit is designed to allow the conversion from a C1 coil to a C3 coil in C1BA and C2BA Cased Coils (B & C width only), applied in either a horizontal left or horizontal right position.

### PROCEDURE

- 1) Remove C1 Coil from coil case.
- 2) Remove the galvanized sheet metal parts attached inside the bottom of the coil case.
- 3) For C2BAs screw the front cabinet tie/duct flange to the case coil cabinet. Use self-tapping screws to screw it on at the front of the top and bottom duct flanges. This will make a duct collar flange across the front of the unit and stabilize the unit sides so they will hold their shape during the rest of the installation.
- 4) To prepare the horizontal drain pan, peel off the sticky back cover on the clips and place them in the 1" x 5/8" recessed areas in the bottom of the pan. The clips should open towards the inner raised area in the bottom of the pan. (See Figure 1.)

- 5) **For B-width cabinets:** Remove the two 1/4" knockouts located on the front and back of the coil delta plates.

**For C-width cabinets:** The coil delta plates will have two sets of 1/4" knockouts used for either horizontal left or horizontal right. Remove the knockouts on the side of the coil that has the horizontal drain pan. (See Figure 2.)

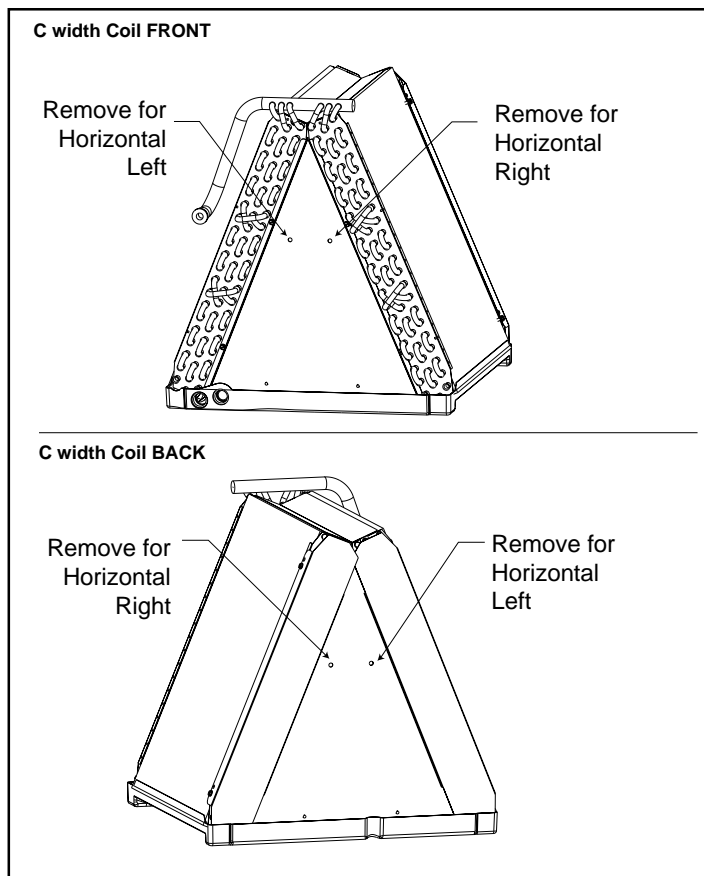


Figure 2

- 6) Insert the ends of the coil support rod into the knocked out holes.

**NOTE:** The side of the coil support rod with the off-set bend and crimped tabs should go on the front of the coil and should clear the copper parts of the coil when installed with the drain pan (step 7).

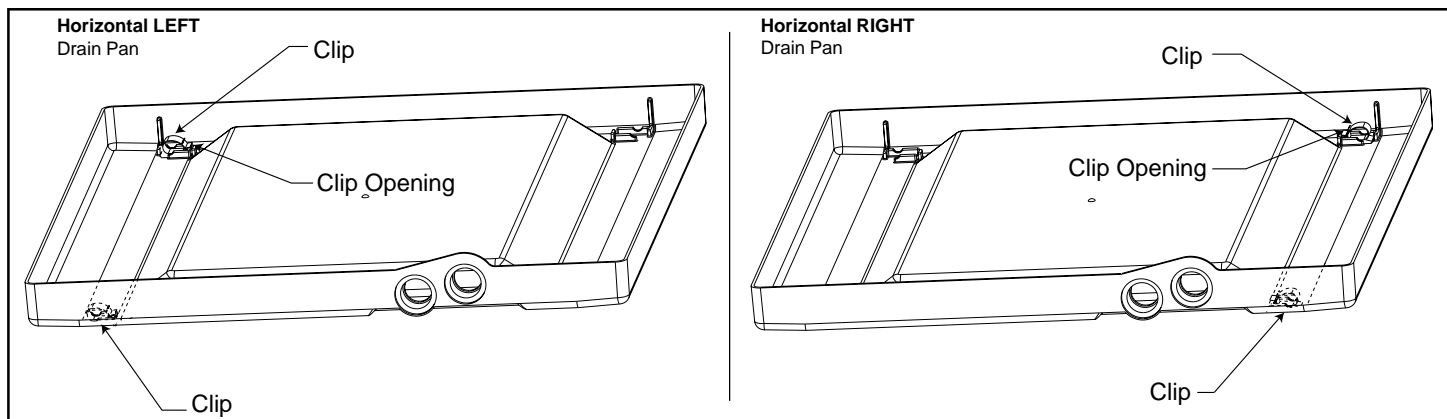
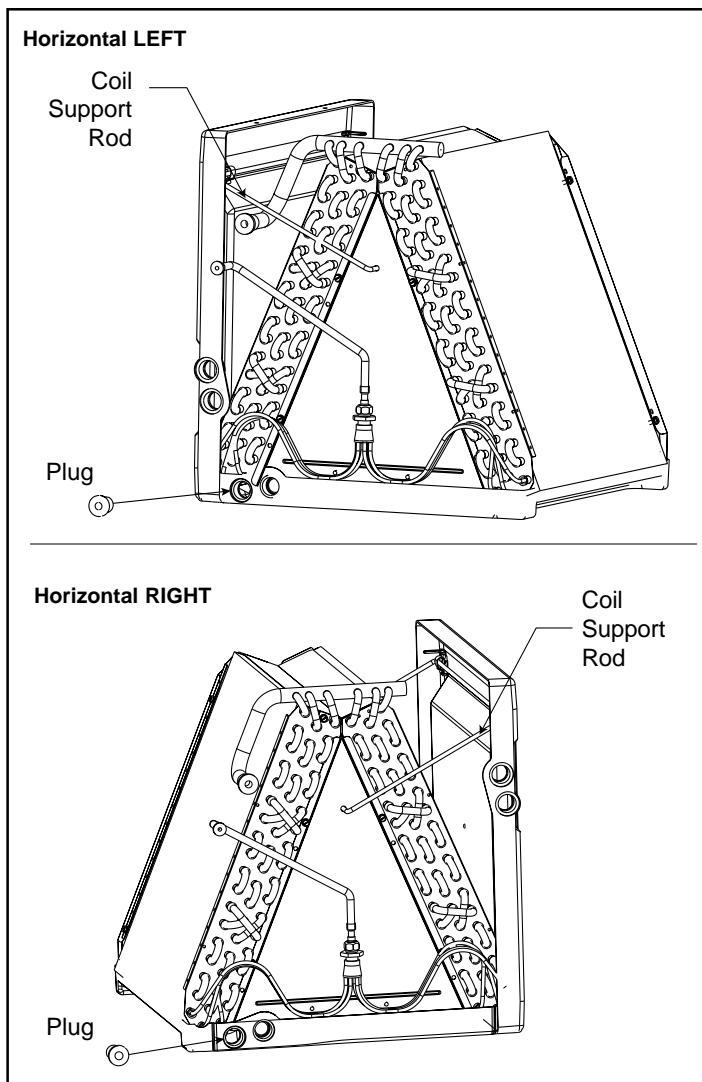
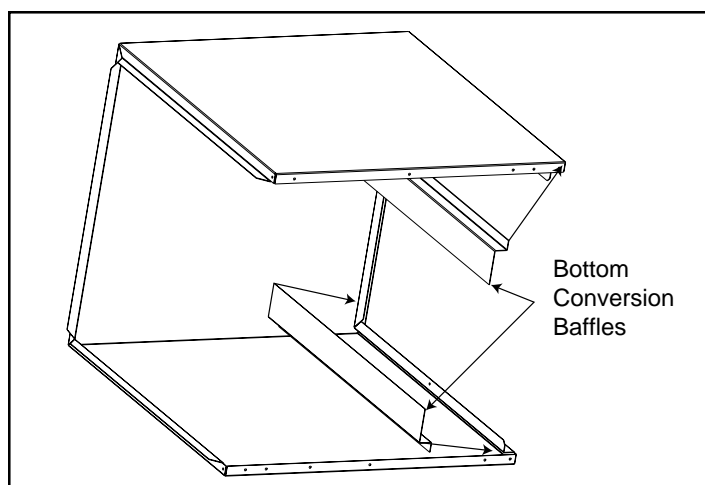


Figure 1

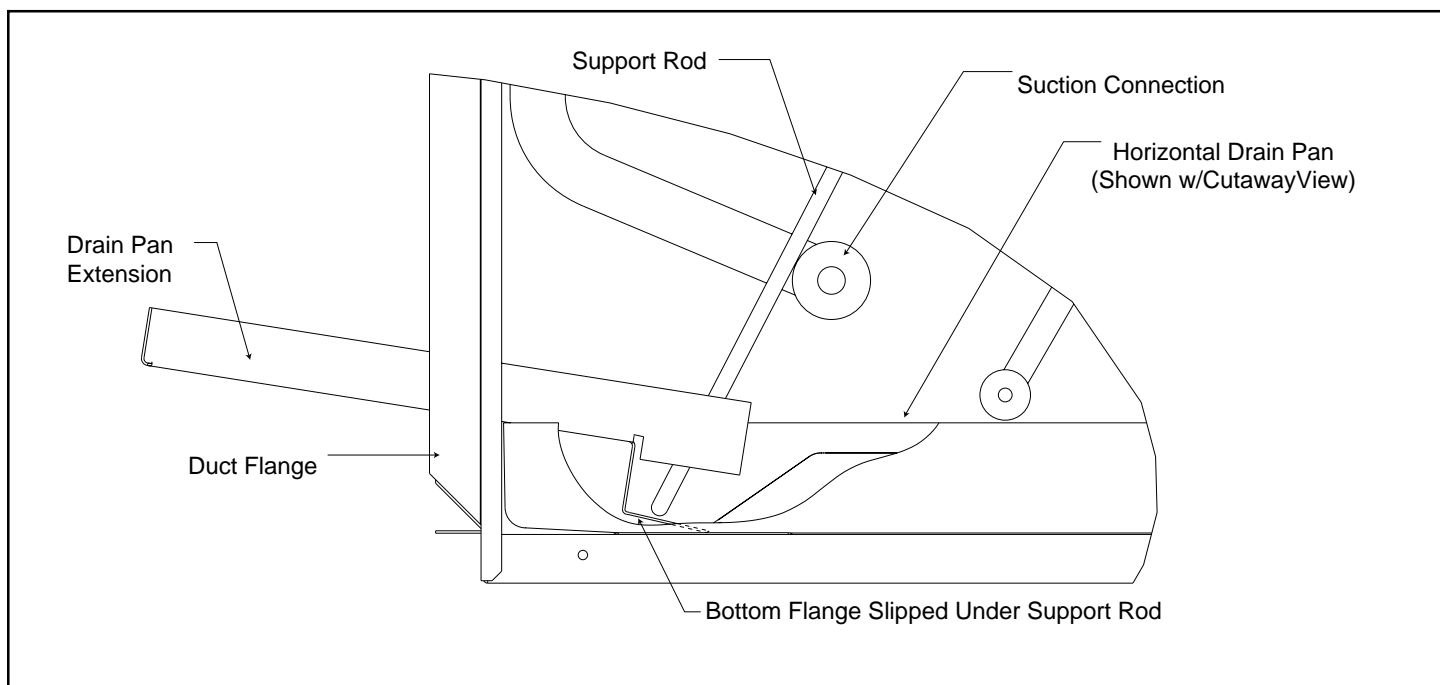


**Figure 3**

- 7) Attach the horizontal drain pan to the coil as shown and insert the extra plastic plug into the open hole of the bottom drain pan to block bypass air flow. (See Figure 3.)
- 8) Place the bottom conversion baffles into the return air top and bottom sides of the coil case so the 1/2" flange angles sit in the channels along the perimeter of the coil case return air opening. The base of the coil will rest in this area and seal against the large 2" flanges. (See Figure 4.)
- 9) If necessary, place the extra sheet of insulation in the cased coil to support the horizontal drain pan.
- 10) Slide the coil and horizontal drain pan assembly into the cabinet.
- 11) To place the drain pan extension into the drain pan slip the bottom flange under the coil support rod in the drain pan. Make sure the side tabs fit inside the drain pan on each side, between the drain pan inside wall and the coil support rod. (See Figure 5)



**Figure 4**



**Figure 5.**  
**(Shown for Horizontal Left)**

- 12) Place the tube close-off plate over the suction and liquid headers and screw onto front cabinet rail.(See Figure 6.)
- 13) Replace the old door with the new door using the self tapping screws where necessary.
- 14) After making all necessary connections and properly charging the system:
  - a. Pull the line-set tubing insulation away from the connection locations, at the front of the unit, if necessary.
  - b. Place the large and small plastic grommets over the suction and liquid tubes respectively.
  - c. Place the tube close-off insulation gasket over the tubes and press onto the tube close-off plate so it sits in the recessed area.

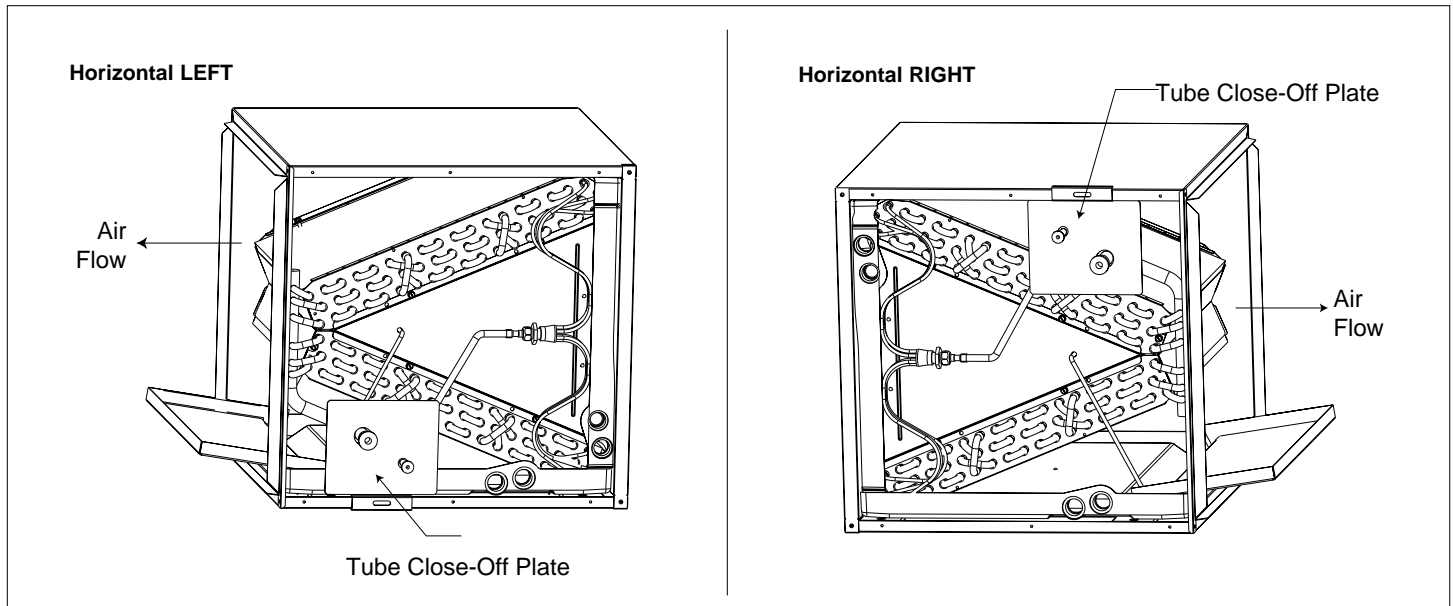


Figure 6

**INSTALLER:**

**PLEASE LEAVE THESE  
INSTALLATION INSTRUCTIONS  
WITH THE HOMEOWNER.**

