

Piezo Ignitor Pilot Lighting Kit

Installation Instructions

For Model Series MG and M1G Furnaces

General

These instructions are primarily intended to assist qualified individuals experienced in the proper installation of heating appliances. Some local codes require licensed installation/service personnel for this type of equipment. Read all instructions carefully before starting the installation.

This kit is designed for use on the NORDYNE series MG and M1G standing pilot furnaces as an aid to lighting the pilot. Four brackets (or two sets of brackets) are included in this kit. However, only one of the two sets of brackets will be used for the installation of the piezo ignitor kit.

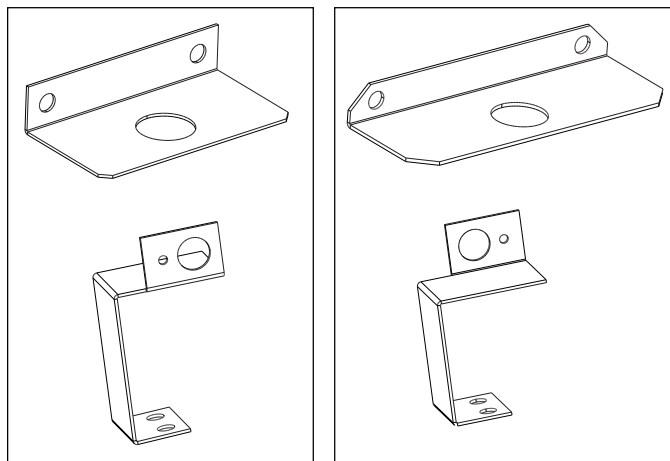
! WARNING:

Prior to installation, turn "OFF" all electrical power to the unit. Furthermore, turn gas valve to the "OFF" position, and shut off the fuel supply to the furnace.

Installing the Kit

A. To Turn Off the Gas to the Appliance:

1. Set the thermostat to "OFF" or its lowest setting.
2. Turn "OFF" all electrical power to the appliance.
3. Remove the furnace door.
4. Push in the gas control lever and move to "OFF". **DO NOT FORCE LEVER.**



MG Series

M1G Series

Figure 1. Installation Brackets

B. Removing the Burner Assembly:

1. Follow the instructions "To Turn Off the Gas to the Appliance".
2. Shut off the gas supply at the meter.
3. Disconnect the gas piping to the gas valve.
4. Remove the wires from the terminals at the top of the gas valve.
5. Remove the fasteners that hold the burner mounting plate to the combustion air box. Keep these fasteners for re-assembly.
6. Carefully remove the burner assembly from the unit.

C. Installing the Piezo Ignitor

1. Refer to Figure 1 to determine which set of brackets is to be used for your particular installation.
2. Remove the two fasteners holding the pilot and pilot shield to the burner.
3. Mount the piezo ignitor bracket to the underneath the pilot shield using the two fasteners, as shown in Figures 2a and 2b. Ensure that both the pilot shield and the ignitor are secured when re-installing the fasteners.

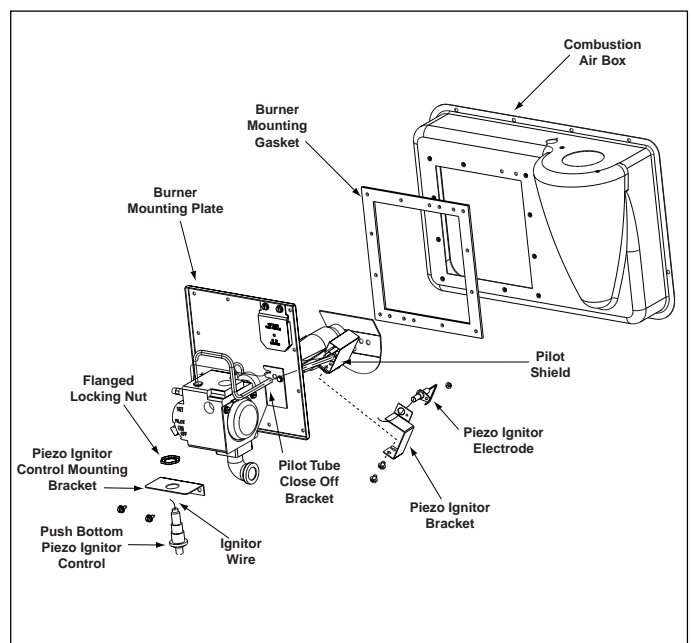


Figure 2a. Installation For Model Series MG Furnaces

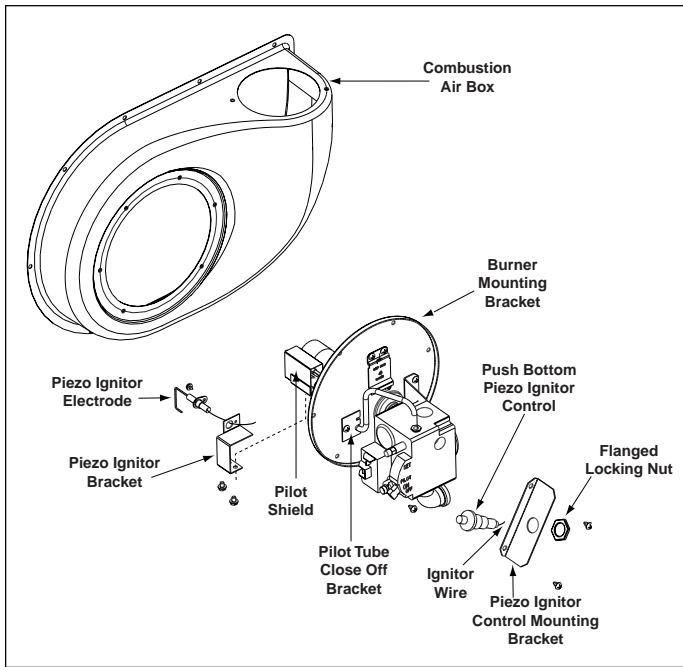


Figure 2b. Installation For Model Series M1G Furnaces

4. Refer to Figure 3 for proper electrode positioning. The electrode must extend to the hood and be spaced 1/8" above the hood as shown in Figure 3. The electrode spacing is important for adequate spark and pilot ignition.
5. Insert the ignitor through the mounting hole and secure in place using the supplied fastener.
6. Slide the fiberglass insulation sleeve over the ignitor wire.
7. Remove the knock-out in the pilot tube close-off bracket using a small screwdriver.
8. Carefully insert the ignitor wire and sleeve through the 1/4" hole.
9. Do NOT cut or tear wire.
10. Attach the push button piezo ignitor control to the piezo ignitor control mounting bracket as shown in Figures 2a and 2b. Be sure that the flanged locking nut is securely fastened for proper grounding.
11. Attach the wire to the piezo ignitor control at the bottom terminal by pushing the wire on securely. The spark is generated by pushing the red button on the piezo ignitor control.

D. Replacing the Burner Assembly

1. Before replacing the burner assembly, ensure that the original gasket has been removed from both the burner assembly and the combustion air box. Discard the original gasket.
NOTE: A gasket is present only in MG series furnaces.
2. Insert the burner back into the heat exchanger. Ensure that the provided burner mounting gasket is in place before inserting the burner. Note that the burner mounting gasket is rectangular for the MG series and is circular for the M1G series.
3. Secure the burner plate with the fasteners that were removed earlier. Mount the piezo ignitor control to the burner plate as shown in Figures 2a and 2b.
4. Reconnect the gas valve wires.
5. Reconnect the gas piping.
6. Ensure that both the electric and gas connections are secure and tight.
7. Open fuel line valves and test for leaks. **DO NOT USE OPEN FLAME TO TEST FOR LEAKS.**

E. Lighting the Pilot

1. Follow the lighting procedure outlined in the Installation Instructions, the Home Owner's Manual, and on the furnace label.
2. Purge the air from the gas line as done in an initial set-up.
3. The pilot can be lit by moving the gas valve to the pilot position and holding, while pushing the red ignitor button to ignite the pilot flame.

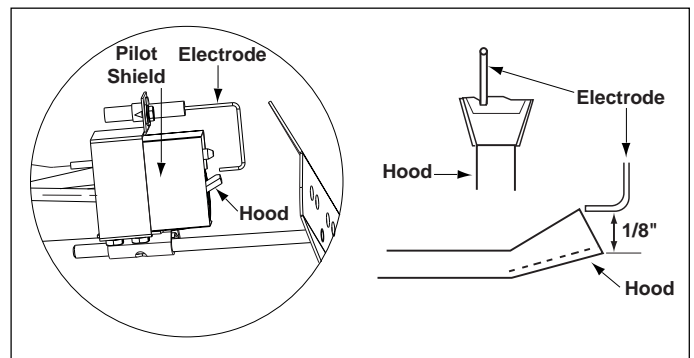


Figure 3. Electrode Positioning (MG Series shown)

INSTALLER: PLEASE LEAVE THESE INSTALLATION INSTRUCTIONS WITH THE HOMEOWNER.

