

## Combustion Air Baffle Kit, #903722

# Installation Instructions

### For M1 Furnace Series Equipped with Combustion Blower Combustion Air Baffle Installation

**IMPORTANT:** Read these instructions before beginning the combustion air baffle installation.

---

#### **WARNING:**

---

**This combustion air baffle kit is to be installed by a qualified service technician in accordance with these instructions and all codes having jurisdiction. Failure to follow these instructions could result in serious injury, property damage, or death. The qualified service technician performing this work assumes responsibility for this alteration.**

---

### Installation Procedure for the Combustion Air Baffle

#### A. Turn Off the Fuel Supply to the Appliance:

1. Set the room thermostat to "OFF" or its lowest temperature setting.
2. Turn "OFF" the main gas supply to the appliance at the manual valve, outside of the appliance casing.
3. Move the appliance gas valve/knob to the "OFF" position.
4. Turn "OFF" the electrical power to the appliance.

#### B. Disassemble the Combustion Blower and 4" Diameter Pipe Assembly

1. Disconnect two 1/4" diameter hoses and wires from the combustion air pipe assembly.
2. Unscrew the two screws from the combustion blower bottom and one screw (if used) from the top of the 4" diameter pipe.
3. Remove silicone from the 4" diameter pipe top and the bottom of the combustion blower.
4. Remove the combustion blower and the pipe assembly.

#### C. Remove Burner Plate Assembly

1. Disconnect gas valve power wires.
2. Disconnect ignitor.
3. Remove screws holding gas valve bracket.
4. Slide out the gas valve.
5. Remove screws holding burner plate and slide out burner assembly.

#### D. Install the Combustion Air Baffle

1. Remove control panel cover.
2. Remove the six top and left screws, #1,2,3, 4, 5, and 6 of air box as shown in Figure 1.
3. Put in the combustion air baffle through the air box burner mount hole, and then install it while pulling gently up through top hole in air box. Align the baffle mounting holes with the air box, the gasket, and the air casing holes using an awl.
4. Screw the two screws (#4 & 5). Tighten up the four screws (#1,2,3 & 6).
5. Ensure the left side of baffle is perpendicular with the air casing. Check that the baffle is uniformly bent through the top hole of the air box.
6. Apply silicon around the area where the two baffle taps are located.

#### E. Completely Assemble New Burner Plate Assembly

1. Carefully remove the ignitor from the old burner.
2. Install the ignitor in the new burner, and tighten well with the screw.  
SINCE THE IGNITOR IS VERY FRAGILE, BE EXTREMELY CAREFUL NOT TO DAMAGE THE IGNITOR.
3. Remove old wire close-off and then install in the new burner plate assembly.
4. Ensure the ignitor wires are not to interfere with the burner primary air entrance.

#### F. Reassemble All the Components

1. Reassemble all the components from steps B and C.
2. Burner plate gasket does not need to be replaced and may be discarded - the lower air box gasket must be reapplied.
3. Silicon must be reapplied to the bottom of the combustion blower and the top of the combustion air pipe. Ensure complete coverage of surfaces with silicon to prevent combustion air leakage.
4. Reinstall control box cover.
5. Turn ON the main gas supply and power.

## G. Check Furnace Operation

1. Set the thermostat lower than room temperature and turn on appliance
2. Ensure the gas valve is in the "ON" position.
3. Adjust the manifold pressure to the rating plate pressure.
4. Check for gas leakage around all the pipe joints and around the gas valve using soap water during the furnace operation.
5. Run the furnace through a few cycles to assure proper operation using the procedure outlined in the installation instructions originally provided with the unit.
6. Set the thermostat to the desired temperature.

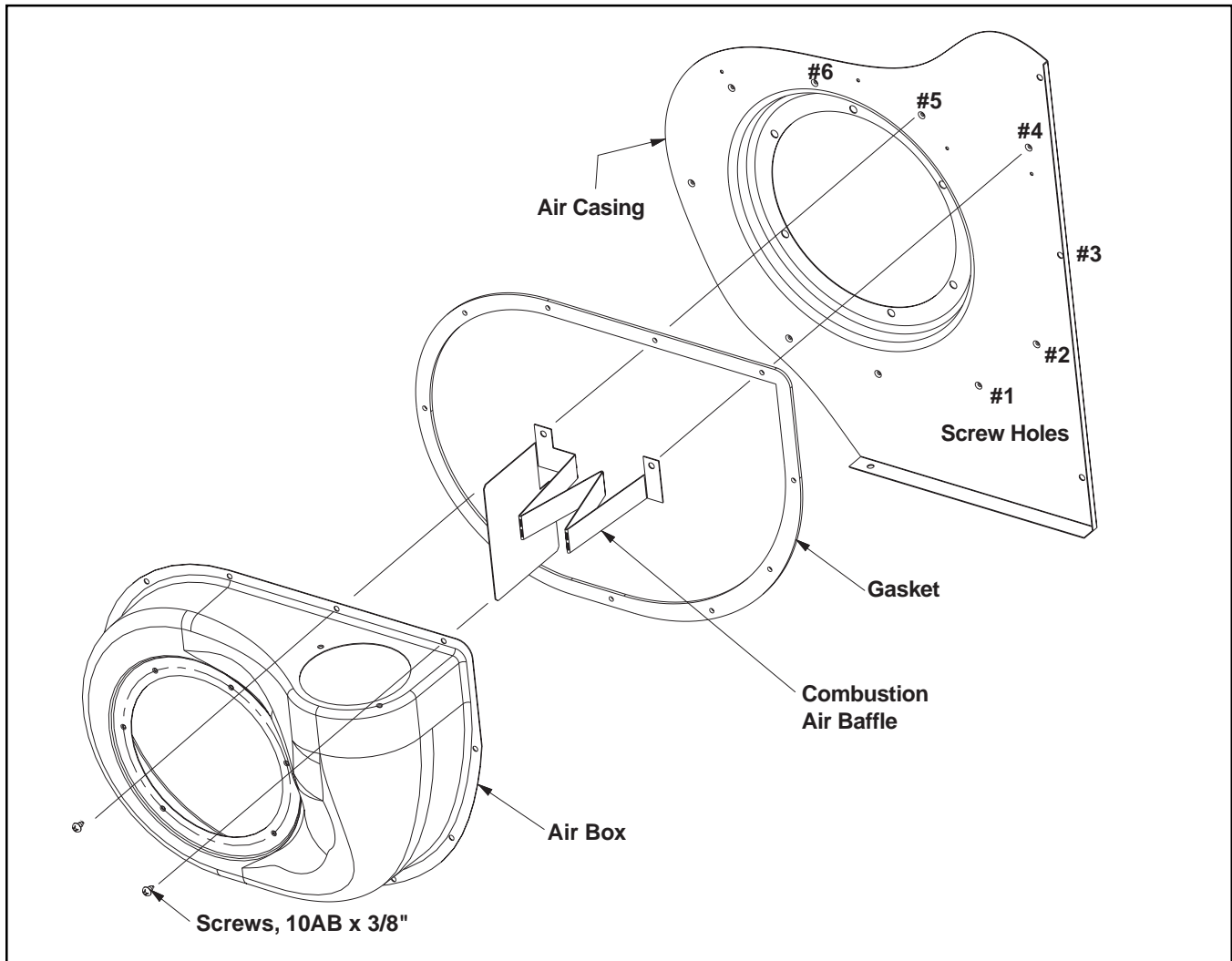


Figure 1. Combustion Air Baffle Assembly



707870A

707870A (Replaces 7078700)