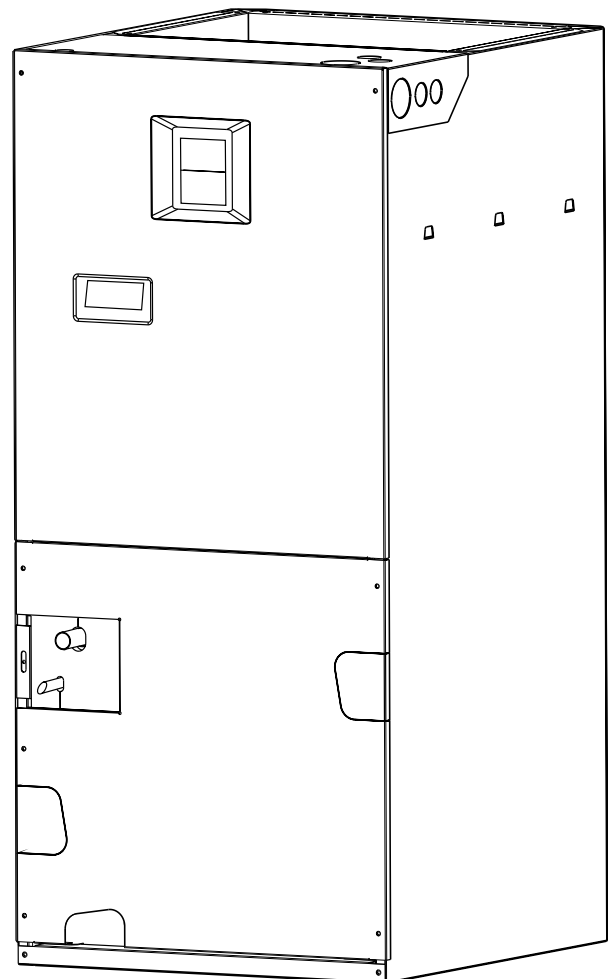


B3B(M,V) Series Air Handler 10 and 12 SEER Residential System 18,000 - 60,000 Btuh (Heat Pump & Air Conditioner)

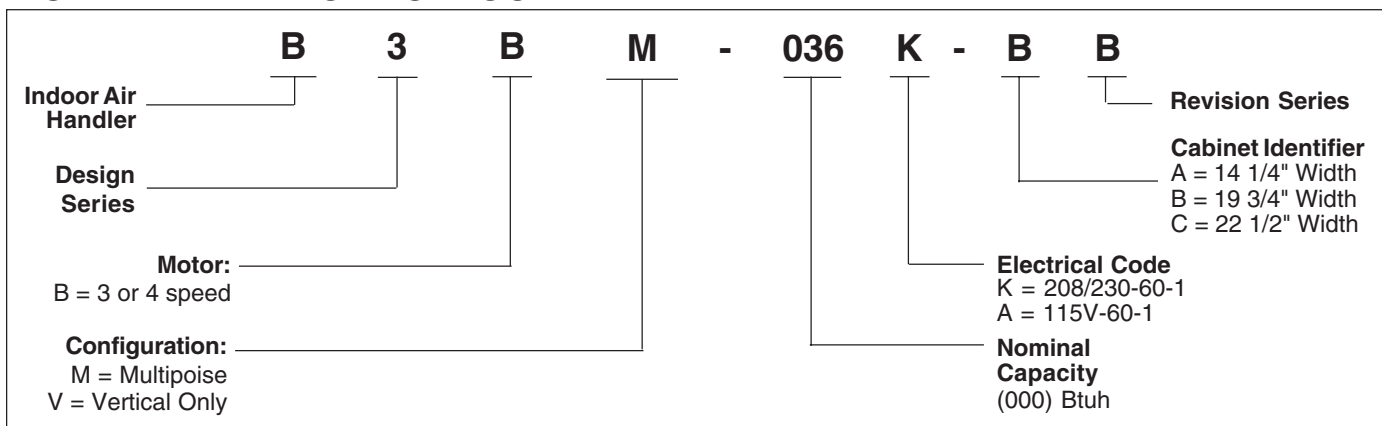
The B3B(M,V) Series of air handlers, when combined with our heat pump or air conditioner, offer a full line of quality, split system heating and cooling equipment.

FEATURES and BENEFITS

- **Durable, Attractive Cabinet** — Designed using galvanized steel with a polyurethane finish. The 950 hour salt spray finish is 1.5 mil thick and resists corrosion 50% better than comparable units. The plastic drain pan is corrosion resistant.
- **Multi-poised** — Can be used in horizontal, upflow, downflow and vertical applications. (B3BM Only)
- **Multi-speed** — Gives flexibility of installation.
- **Ease-of-Service** — Plug-in wire connections and built-in filter rack makes the air handler easy to service.
- **Plug-in Heater Kits** — Available in 5kw - 20 kw (Not for use in 115 Volt units)
- **Breaker Accessibility** — Breaker accessible from front of unit when heater is applied.
- **No Fasteners on sides or back** — Smooth surfaces for installations.
- **Circuit Board** — Incorporating Blower Delay Relay and Low Voltage Terminal Strip.
- **Circuit Board** — Incorporating Blower Delay Relay and Low Voltage Terminal Strip.
- **Warranty** — The best in the industry.
 - 5 year limited parts
 - 2 year mileage
 - 2 year labor



MODEL IDENTIFICATION CODE



SPECIFICATIONS

Model Number B3B(M,V)-	024K-A	030K-A	030K-B	036K-B	042K-B	048K-B	060K-C	062K-C	066K-C
Nominal Cooling Capacity - Btuh (1)	24,000	30,000	30,000	36,000	42,000	48,000	60,000	60,000	60,000
Refrigerant Flow Control (2)	.060 (.051)*	.063 (.067)*	.063	.067	.075	.080	.093	.085	.103
Maximum Available (3) Auxiliary Heat (kw)	10	14	20	20	20	20	20	20	20
Nominal Blower Size (D x W)	10 x 6	10 x 6	10 x 8	10 x 8	10 x 8	10 x 8	10 x 10	10 x 10	10 x 10
(H.P. - Speed - Type)	1/5-3-PSC	1/3-3-PSC	1/3-3-PSC	1/3-3-PSC	1/3-3-PSC	1/2-3-PSC	3/4-3-PSC	3/4-3-PSC	3/4-3-PSC
Rated External Static Pressure (in. W.C.)	.30	.35	.35	.35	.35	.40	.40	.40	.40
CFM @ Rated ESP	880	1150	1250	1250	1300	1450	1880	1920	1920
Filter Size (4)	12 x 20 x 1	12 x 20 x 1	18 x 20 x 1	18 x 20 x 1	18 x 20 x 1	18 x 20 x 1	20 x 20 x 1	20 x 20 x 1	20 x 20 x 1
Approximate Shipping Weight (lbs.)	75	85	105	105	110	140	145	150	155

(1) See current ARI Directory for certified combinations and ratings.

(2) Units are 10 SEER air conditioner ready as shipped.

(3) Heater kits not applicable to 115 Volt units.

(4) Filter is field supplied.

* Additional orifice shipped with unit

ACCESSORIES

Accessory Kit Description	Cabinet Size			Order Number
	A	B	C	
Downflow Adaptor Kit	X			917342
		X		917343A
			X	917344A
Single Circuit Adaptor Kit		X	X	913874
B3BV Horizontal Drain Pan Conversion Kit	X	X	X	903749
Variable Speed Kit		X		903764B
			X	903765B

**240V Single Phase Electric Heat Kits

KW	No. of Stages	Approved for Cabinet	Order Number	
			with Circuit Breaker(s)	w/o Circuit Breaker(s)
5	1	A, B, C	917367B	917366B
8	1	A, B, C	917370B	917368B
10	1	A, B, C	917374B	917372B
12	1	A, B, C	904198B	N/A
15	1	B, C	903959B	N/A
20	1	B, C	903960B	N/A

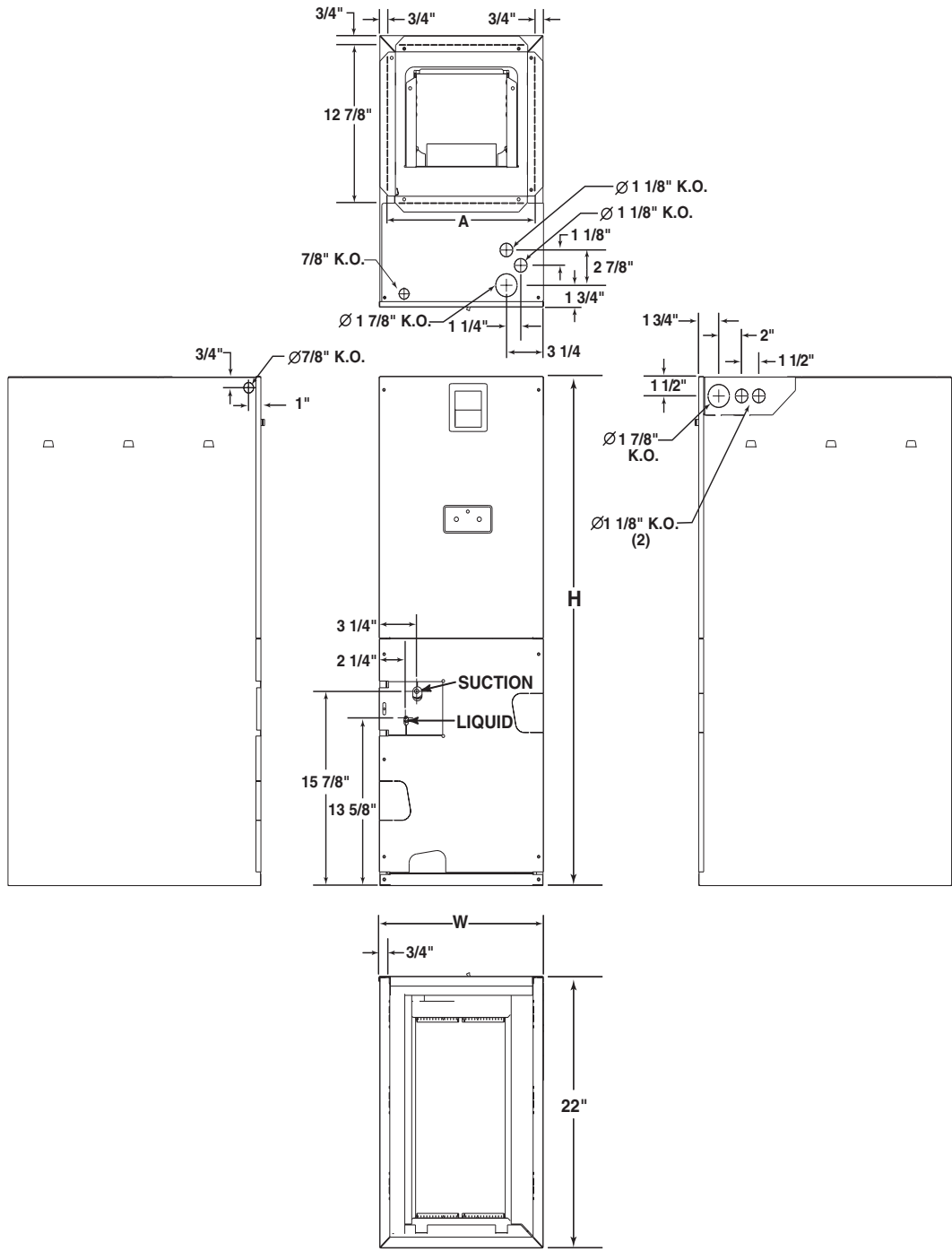
**240V 3-Phase Electric Heat Kits

KW	No. of Stages	Approved for Cabinet	Order Number	
			with Circuit Breaker(s)	w/o Circuit Breaker(s)
9	1	B, C	917449	N/A
15	1	B, C	917450	N/A

**Not for use with 115 Volt units

DIMENSIONS

Model Number B3B(M,V)-	H	W	A	Refrigerant Connections		Filter Size	Supply Air Duct Dimension
				Suction Dia.	Liquid Dia.		
024K-A	41 1/2	14 1/4	12 3/4	3/4	3/8	12 x 20 x 1	12 7/8 x 12 3/4
030K-A	41 1/2	14 1/4	12 3/4	3/4	3/8	12 x 20 x 1	12 7/8 x 12 3/4
030K-B	43 1/2	19 3/4	18 1/4	3/4	3/8	18 x 20 x 1	12 7/8 x 18 1/4
036K-B	43 1/2	19 3/4	18 1/4	3/4	3/8	18 x 20 x 1	12 7/8 x 18 1/4
042K-B	43 1/2	19 3/4	18 1/4	3/4	3/8	18 x 20 x 1	12 7/8 x 18 1/4
048K-B	43 1/2	19 3/4	18 1/4	3/4	3/8	18 x 20 x 1	12 7/8 x 18 1/4
060K-C	43 1/2	22 1/2	21	7/8	3/8	20 x 20 x 1	12 7/8 x 21
062K-C	53 1/2	22 1/2	21	7/8	3/8	20 x 20 x 1	12 7/8 x 21
066K-C	53 1/2	22 1/2	21	7/8	3/8	20 x 20 x 1	12 7/8 x 21



SYSTEM AIR FLOW DATA

Unit	HP	Speed	ESP ("H2O)	CFM		CFM High
				Low	Med	
024K-A	1/5 HP 10 X 6	3	0.1	620	750	950
			0.2	580	730	930
			0.3	520	680	880
			0.4	460	630	830
			0.5	400	580	770
030K-A	1/3 HP 10 X 6	3	0.1	860	1100	1250
			0.2	840	1090	1230
			0.3	800	1040	1170
			0.4	750	990	1120
			0.5	720	950	1070
030K-B	1/3 HP 10 X 8	3	0.1	920	1230	1420
			0.2	890	1190	1380
			0.3	820	1120	1290
			0.4	760	1050	1210
			0.5	690	980	1130
036K-B	1/3 HP 10 X 8	3	0.1	920	1230	1420
			0.2	890	1190	1380
			0.3	820	1120	1290
			0.4	760	1050	1210
			0.5	690	980	1130
042K-B	1/3 HP 10 X 8	3	0.1	920	1230	1420
			0.2	890	1190	1380
			0.3	820	1120	1300
			0.4	760	1090	1210
			0.5	690	980	1130
048K-B	1/2 HP 10 X 8	3	0.1	1510	1620	1690
			0.2	1470	1580	1650
			0.3	1390	1490	1510
			0.4	1320	1410	1450
			0.5	1250	1340	1380
060K-C	3/4 HP 10 X 10	3	0.1	1840	1990	2090
			0.2	1780	1930	2060
			0.3	1710	1860	1980
			0.4	1640	1790	1880
			0.5	1570	1710	1810
062K-C	3/4 HP 10 X 10	3	0.1	1880	2030	2130
			0.2	1820	1970	2100
			0.3	1750	1900	2020
			0.4	1680	1830	1920
			0.5	1610	1750	1850
066K-C	3/4 HP 10 X 10	3	0.1	1880	2030	2130
			0.2	1820	1970	2100
			0.3	1750	1900	2020
			0.4	1680	1830	1920
			0.5	1610	1750	1850

Notes:

- 1) Airflow is shown in cfm, +/- 5%.
- 2) External static pressure is shown in inches w.c.
- 3) All airflows are measured without filter and with dry coil. For filter velocity of 300 ft./min. subtract .08" external static pressure. For wet coil, subtract .1" external static pressure.
- 4) See unit nameplate or installation instructions for maximum recommended external static pressure.

ELECTRICAL DATA

Model Number H4HK			Voltage			KW			Standard Air Handler						Variable Speed Air Handler					
									Min. Circuit Ampacity			Max. Over-Current Protection			Min. Circuit Ampacity			Max. Over-Current Protection		
									Circuit A	Circuit B	Single Circuit	Circuit A	Circuit B	Single Circuit	Circuit A	Circuit B	Single Circuit	Circuit A	Circuit B	Single Circuit
005H-XXB	240	4.8	-	-	30.0	-	-	30	-	-	34.8	-	-	40						
008H-XXB	240	7.5	-	-	44.1	-	-	50	-	-	47.8	-	-	50						
010H-XXB	240	9.6	-	-	55.0	-	-	60	-	-	58.8	-	-	60						
012H-XXB	240	11.6	35.2	30.2	65.4	40	40	70	39.0	30.2	69.2	40	40	70						
015H-XXB	240	14.4	55.0	25.0	80.0	60	30	90	59.3	25.0	83.8	60	30	90						
020H-XXB	240	19.2	55.0	50.0	105.0	60	50	125	59.3	50.0	108.8	60	50	125						
005H-XXB	208	3.6	-	-	26.6	-	-	30	-	-	30.9	-	-	40						
008H-XXB	208	5.6	-	-	38.8	-	-	40	-	-	43.1	-	-	50						
010H-XXB	208	7.2	-	-	48.3	-	-	50	-	-	52.5	-	-	60						
012H-XXB	208	8.8	31.4	26.4	57.9	40	30	60	35.2	26.4	61.6	40	30	70						
015H-XXB	208	10.8	48.3	21.6	69.7	50	30	70	52.5	21.6	74.2	60	30	80						
020H-XXB	208	14.4	48.3	43.3	91.5	50	50	100	52.5	43.3	95.8	60	50	100						
009Q-XXB	240	9.0	-	-	32.4	-	-	35	-	-	35.8	-	-	40						
015Q-XXB	240	14.4	-	-	48.7	-	-	50	-	-	52.1	-	-	60						
009Q-XXB	208	6.8	-	-	28.8	-	-	30	-	-	32.2	-	-	35						
015Q-XXB	208	10.8	-	-	42.9	-	-	45	-	-	46.3	-	-	50						



CERTIFICATION APPLIES ONLY WHEN THE COMPLETE SYSTEM IS LISTED WITH ARI

809B-0605 (Replaces 809B-1104)