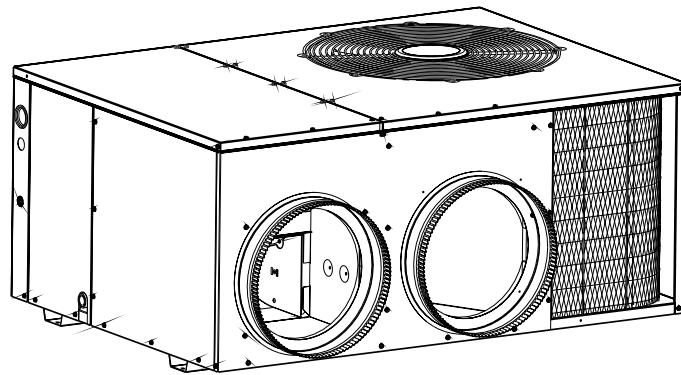
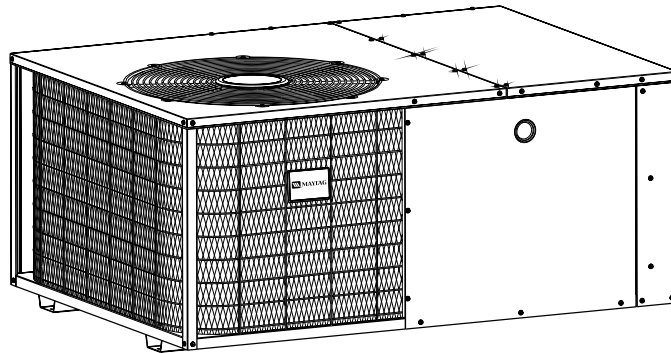




**MAYTAG**

## TECHNICAL SPECIFICATIONS

### *Model PPH1RC Series*



M1010 Product Line

**Single Packaged Heat Pump  
12 SEER - 2 Ton thru 4 Ton Units**



- **10 YEAR  
WARRANTY**
- **WORRY-FREE  
PERFORMANCE**
- **5 YEAR  
DEPENDABILITY  
PROMISE**

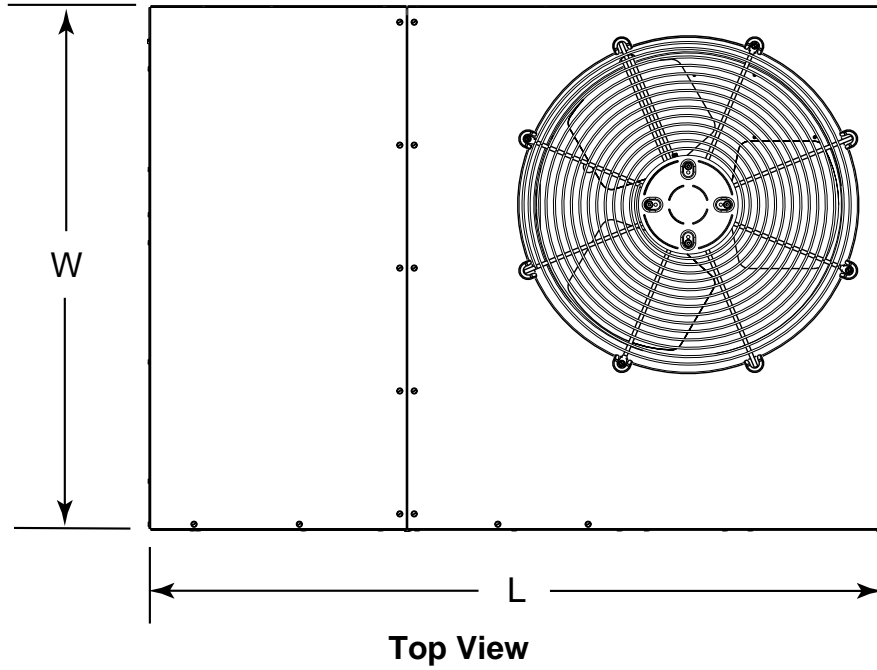


The PPH1RC Series single packaged heat pumps are high efficiency self contained cooling and heating units that can be installed on a slab. Units are ETL and ETLc listed. The unit is truly designed with the contractor and the consumer in mind.

### Features and Benefits

- **State-of-the-art Copeland Scroll Compressor** is standard equipment.
- **Galvanized Steel Cabinet** – Unit is trimmed in a silicone-protected polyester finish with a 950 hour salt spray finish that resists corrosion 50% better than comparable units.
- **Coils** are designed to optimize heat transfer, minimize size and cost, and increase durability and reliability.
- **A heavy duty PSC motor** for long lasting reliability and operation. Requires no maintenance and is completely protected from rain and snow.
- **The service valves are easily accessible** and simplify servicing of the refrigeration system.
- **A wire coil guard and mesh hail guard that will never rust** protects the coil from being damaged by balls, lawnmowers, hail, etc.
- **Designed to make servicing easier** for the contractor, access panels are provided to all major components and the compressor.
- **1" clearance** to combustibles on duct side of the unit allows for installations in tight areas.
- **Easy access** to evaporator for cleaning and general maintenance.
- **Drain trap** design optimizes drainage capabilities.
- **Easy to install** electric heat strip provides up to 20 kw of heat output.
- **Compact footprint and profile** make the Q3 Series easy to install and transport.
- **Suction Accumulator and Crankcase Heat** – Protection from liquid flood back and future compressor failures. All 12 seer H.P. have scroll compressors.
- **Hot Gas Muffler** – Reduces compressor noise and vibration.
- **Outdoor thermostat** is standard equipment on all heat pumps.
- **Time / Temperature Defrost** – A reliable, industry standard control offers various time settings to meet any type climate.
- **Five Minute Restart Time Delay** – When the unit shuts down, a five minute delay keeps the unit from restarting, eliminating the highest cause for compressor failure.
- **Low Pressure Control** – Loss of charge protection ensures long compressor life.
- **10 Year Residential Parts and Labor Warranty and 5 Year Dependability Promise**  
The best warranty in the business.

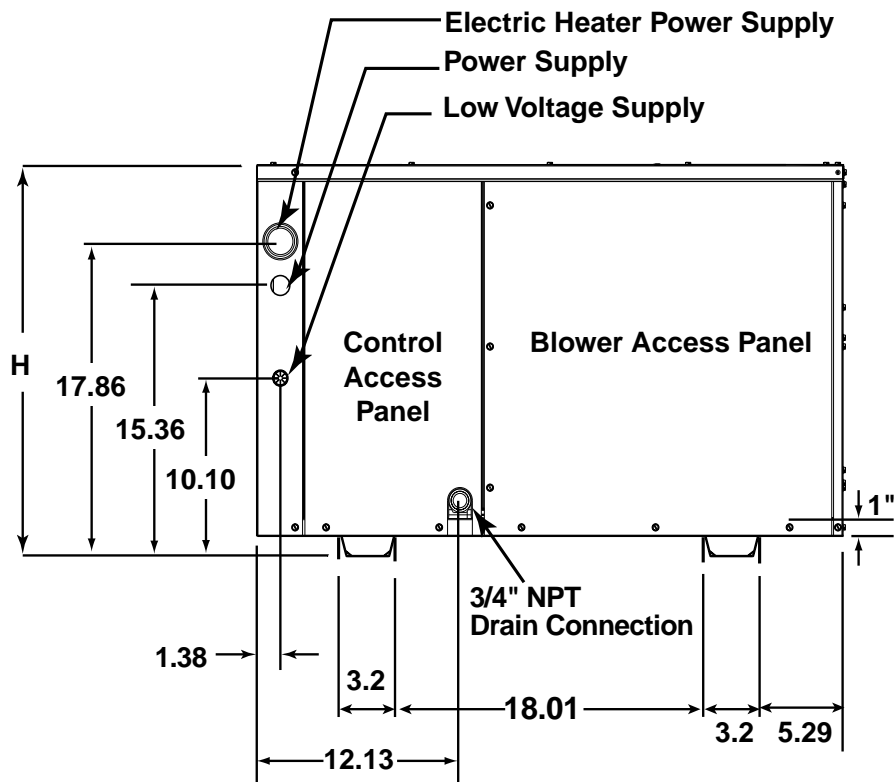
# DIMENSIONS



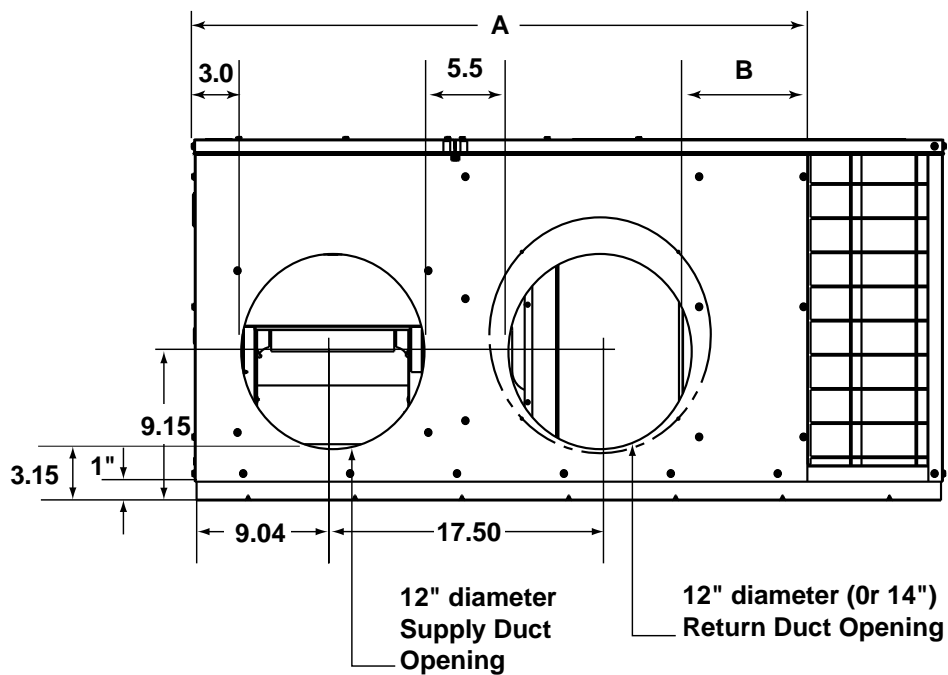
Model Number PPH1RC	(L) Length	(W) Width	(H) Height	A	B
024K	49	35	22.2	40.15	7.61
030K	49	35	22.2	40.15	7.61
036K	49	35	30.2	40.15	7.61
042K	49	35	30.2	40.15	7.61
048K	49	35	30.2	35.02	2.48

Model Number PPH1RC	Return Diameter (in)	Supply Diameter (in)
024K	12	12
030K	12	12
036K	14	12
042K	14	12
048K	14	12

# DIMENSIONS continued



Side View



Back (Duct) View

# ELECTRICAL DATA

Model Number	Heater Installed Norm. KW	Single Supply Circuit Option										Multiple Supply Circuit Option									
		Circuit A					Circuit B					Circuit C					Circuit D				
		Minimum Circuit Amp.	Rec Wire Gauge (60°C Cu)	Rec Wire Gauge (75°C Cu)	Rec Wire Gauge (90°C Cu)	Maximum Over-current Rating*	Minimum Circuit Amp.	Rec Wire Gauge (60°C Cu)	Rec Wire Gauge (75°C Cu)	Rec Wire Gauge (90°C Cu)	Maximum Over-current Rating*	Minimum Circuit Amp.	Rec Wire Gauge (60°C Cu)	Rec Wire Gauge (75°C Cu)	Rec Wire Gauge (90°C Cu)	Maximum Over-current Rating	Minimum Circuit Amp.	Rec Wire Gauge (60°C Cu)	Rec Wire Gauge (75°C Cu)	Rec Wire Gauge (90°C Cu)	Maximum Over-current Rating
PPH1RC024K	0	15.4	12	12	25	-	-	-	-	-	-	-	-	-	-	-	-	-	-	-	-
	5	40.4	6	8	45	-	-	-	-	-	-	-	-	-	-	-	-	-	-	-	-
	8	54.9	6	6	60	-	-	-	-	-	-	-	-	-	-	-	-	-	-	-	-
PPH1RC030K	0	65.4	4	4	70	14	14	14	14	20	51.1	6	6	8	60	-	-	-	-	-	-
	5	20.1	10	10	30	-	-	-	-	-	-	-	-	-	-	-	-	-	-	-	-
	8	45.1	6	8	50	-	-	-	-	-	-	-	-	-	-	-	-	-	-	-	-
PPH1RC036K	0	59.6	4	6	60	-	-	-	-	-	-	-	-	-	-	-	-	-	-	-	-
	10	70.1	3	4	80	18	12	12	12	30	52.1	6	6	8	60	-	-	-	-	-	-
	15	95.1	1	3	100	43	6	8	8	50	52.1	6	6	8	60	-	-	-	-	-	-
PPH1RC042K	0	-	-	-	-	18	12	12	12	30	27.1	10	10	10	30	50	6	6	8	8	60
	5	21.8	10	10	35	-	-	-	-	-	-	-	-	-	-	-	-	-	-	-	-
	8	46.8	6	8	50	-	-	-	-	-	-	-	-	-	-	-	-	-	-	-	-
PPH1RC048K	0	61.4	4	6	70	19.7	12	12	12	30	41.7	6	8	8	45	-	-	-	-	-	-
	10	71.8	3	4	80	19.7	12	12	12	30	52.1	6	6	8	60	-	-	-	-	-	-
	15	96.8	1	3	100	44.7	6	8	8	50	52.1	6	6	8	60	-	-	-	-	-	-
PPH1RC048K	0	-	-	-	-	19.7	12	12	12	30	27.1	10	10	10	30	50	6	6	8	8	60
	5	22.7	10	10	35	-	-	-	-	-	-	-	-	-	-	-	-	-	-	-	-
	8	47.7	6	8	50	-	-	-	-	-	-	-	-	-	-	-	-	-	-	-	-
PPH1RC048K	0	62.2	4	6	70	20.6	10	10	10	35	41.7	6	8	8	45	-	-	-	-	-	-
	10	72.7	3	4	80	20.6	10	10	10	35	52.1	6	6	8	60	-	-	-	-	-	-
	15	97.7	1	3	100	45.6	6	8	8	50	52.1	6	6	8	60	-	-	-	-	-	-
PPH1RC048K	0	-	-	-	-	20.6	10	10	10	35	30.2	8	8	8	60	50	6	6	8	8	60
	5	28.3	10	10	45	20.6	10	10	10	35	52.1	6	6	8	60	50	6	6	8	8	60
	8	53.3	6	8	60	-	-	-	-	-	-	-	-	-	-	-	-	-	-	-	-
PPH1RC048K	0	67.9	4	4	70	25.3	10	10	10	40	42.6	6	8	8	45	-	-	-	-	-	-
	10	78.3	3	4	80	25.3	10	10	10	40	53	6	6	8	60	-	-	-	-	-	-
	15	103.3	1	2	110	50.3	6	6	8	60	53	6	6	8	60	-	-	-	-	-	-
PPH1RC048K	0	-	-	-	-	25.3	10	10	10	40	28	10	10	10	30	50	6	6	8	8	60
	5	128	0	1	2	150	25.3	10	10	40	53	6	6	8	60	50	6	6	8	8	60
	8	-	-	-	-	-	-	-	-	-	-	-	-	-	-	-	-	-	-	-	-

\*When overcurrent rating exceeds 60, internal circuit breakers must be installed in addition to branch circuit protection at distribution panel.

## HEATER APPLICATION MATRIX

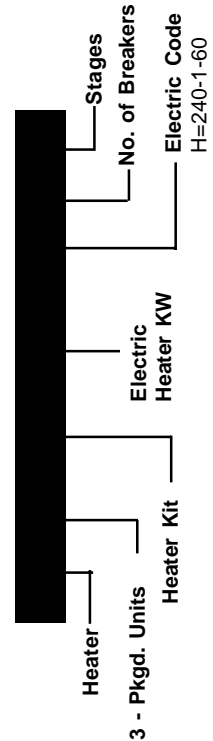
Model Number	Motor Speed	H3HK-005H-01A 917166A	H3HK-008H-01A 917167A	H3HK-010H-01A 917168A	H3HK-015H-01A 917169A	H3HK-020H-01A 917170A	H3HK-015H-21A 917172A	H3HK-020H-21A 917173A
024K	High	X(0)	X(0)	X(2)	NA	NA	NA	NA
	Low	X(0)	X(0)	X(2)	NA	NA	NA	NA
030K	High	X(0)	X(0)	X(2)	X(2 or 3)	NA	X(0 or 1)	NA
	Low	X(0)	X(0)	X(2)	X(2 or 3)	NA	X(0 or 1)	NA
036K	High	X(0)	X(0)	X(2)	X(2 or 3)	NA	X(0 or 1)	NA
	Low	X(0)	X(0)	X(2)	X(2 or 3)	NA	X(0 or 1)	NA
042K	High	X(0)	X(2)	X(2)	X(2 or 3)	X(3)	X(0 or 1)	X(1)
	Low	X(0)	X(2)	X(2)	X(2 or 3)	NA	X(0 or 1)	NA
048K	High	X(2)	X(2)	X(2)	X(2 or 3)	X(3)	X(0 or 1)	X(1)
	Low	X(2)	X(2)	X(2)	X(2 or 3)	NA	X(0 or 1)	NA

NA = Not Approved  
( ) = Number of internal circuit breaker kits required.

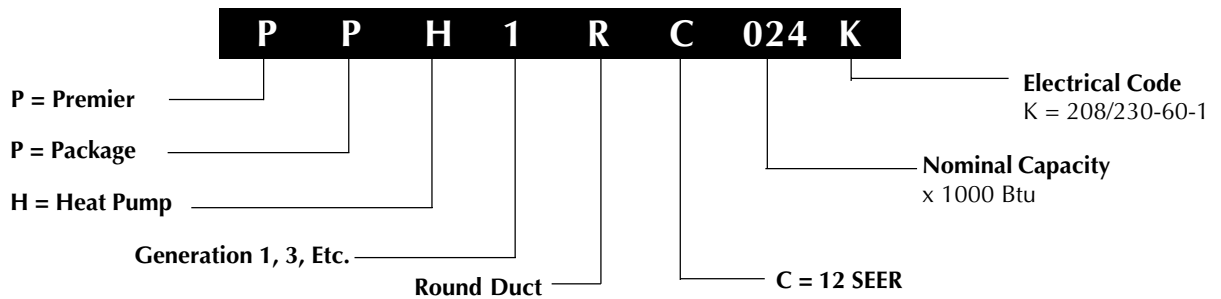
## HEATER KIT ACCESSORIES

Description	Part Number
4-Pole single circuit adaptor	913350
6-Pole single circuit adaptor	913556
Circuit Breaker Single Phase (2-pole)	913554

## IDENTIFICATION CODE



## IDENTIFICATION CODE



## PHYSICAL SPECIFICATIONS

Model No. PPH1RC	024K	030K	036K	042K	048K
<b>Electric Rating — 60 Hz (a)</b>					
Operating Voltage Range	187 - 253	187 - 253	187 - 253	187 - 253	187 - 253
Min. Circuit Ampacity (a)	15.4	20.1	21.8	22.7	28.3
Field Wire Size — AWG (a)	12	10	10	10	10
Delay Fuse — Max. (b)	25	30	35	35	45
Total Unit — AMPS	12.8	16.7	18.1	21.3	28.0
<b>Compressor</b>					
Volts	208 - 230	208 - 230	208 - 230	208 - 230	208 - 230
Rated Load Amps	10.2	13.4	14.7	17.9	23.7
Lock Rotor Amps	56.0	72.5	83.0	104.0	129.0
<b>Fan Motor and Condenser</b>					
Fan Motor — HP - RPM	1/4 - 1125	1/4 - 1125	1/3 - 1100	1/3 - 1100	1/3 - 1100
Fan Motor — Amps	1.2	1.2	1.3	1.3	1.3
Fan Dia. — CFM	20" - 2700	20" - 2700	20" - 2700	20" - 3000	20" - 3000
<b>Motor and Evaporator</b>					
Blower Motor — HP - RPM	1/4 - 980	1/3 - 1080	1/3 - 900	1/3 - 900	1/2 - 1000
Blower Motor — Amps	1.4	2.1	2.1	2.1	3
CFM @ E.S.P. — in. W.C.	1000 @ .30	1320 @ .30	1390 @ .30	1390 @ .30	1730 @ .30
<b>Refrigerant — Oz.</b>	80	98	104	104	140
<b>Shipping Weight -- Lbs.</b>	285	300	345	350	385

- (a) Amperage and wire size based on refrigeration system only with 60° C wire, 50 ft. length. See Electrical Data tables for supplemental electric heaters. Refer to National Electric Code for additional derating factors for field installed conductors.
- (b) Use time delay fuse or "HACR" type circuit breaker.

## SYSTEM HEATING AND COOLING CAPACITIES

Model Number PPH1RC	Cooling Btuh	SEER	Heating Btuh @ 47	HSPF
024K	23,800	12	23,400	7.0
030K	30,000	12	27,200	7.0
036K	35,000	12	34,000	7.0
042K	42,000	12	40,500	7.0
048K	47,000	12	47,500	7.0

# BLOWER PERFORMANCE

Model Number		External Static Pressure (in. WC)					
PPH1RC		0.1	0.2	0.3	0.4	0.5	0.6
024K	High	1120	1060	1000	930	860	750
	Low	840	800	760	710	610	N/A
030K	High	1450	1380	1320	1240	1150	1050
	Low	1070	1050	1030	980	930	N/A
036K	High	1480	1440	1390	1330	1270	1190
	Low	1270	1230	1190	1140	1080	1000
042K	High	1480	1430	1390	1330	1270	1190
	Low	1270	1220	1180	1140	1080	1010
048K	High	1840	1780	1730	1650	1580	1500
	Low	1700	1650	1590	1540	1470	1390

COPPER WIRE SIZE — AWG (1% Voltage Drop)				
Supply Wire Length-Feet				Supply Circuit
200	150	100	50	Ampacity
6	8	10	14	15
4	6	8	12	20
4	6	8	10	25
4	4	6	10	30
3	4	6	8	35
3	4	6	8	40
2	3	4	6	45
2	3	4	6	50

Wire Size based on N.E.C. for 60° type copper conductors.



CERTIFICATION APPLIES  
ONLY WHEN THE  
COMPLETE SYSTEM  
IS LISTED WITH ARI

We Encourage  
Professionalism



Through Technician  
Certification by NATE



Before purchasing this appliance, read important energy cost and efficiency information available from your retailer. Specifications and illustrations subject to change without notice and without incurring obligations.

Maytag is a registered trademark of the Maytag Corporation and is used under license to NORDYNE Inc.

288B-0303 (Replaces 288B-0802)

Printed in U.S.A. (03/03)