



TECHNICAL SPECIFICATIONS

Model POF Series



M1010 Product Line

**High Boy /Horizontal Oil Furnace with Variable
Speed Blower**

- **10 YEAR
WARRANTY**
- **WORRY-FREE
PERFORMANCE**
- **5 YEAR
DEPENDABILITY
PROMISE**



The heart of the POF series furnace with variable speed blower is the ECM motor (electronically commutated motor). The ECM consists of a brushless DC type motor with a microprocessor based variable speed drive. The drive continuously monitors RPM and torque output of the motor. This information is fed into pre-programmed algorithms in the microprocessor for correct motor output to maintain constant airflow regardless of external static pressure. The microprocessor stores delay profiles to optimize the efficiency and performance of the split system. The variable speed blower steps through intermediate airflows during the on and off profiles. This results in smoother, more efficient operation with quiet, gradual starts and stops.

Features and Benefits

Best warranty in the business —

- A lifetime replacement warranty on the heat exchanger
- 10 Year Parts and Labor Warranty and 5 Year Dependability Promise.
- **Cabinet Construction** – 22 gauge steel cabinet ensures strength and quiet operation.
- **Cabinet Finish** – Thermoset powder paint for greater durability.
- **Firing Rates** – Multi-firing rates for a wide range of applications.
- **Stainless Steel Doors** – The unit features attractive brushed stainless steel doors that you expect on distinctive appliances.
- **Burner** – Equipped with industry leading Beckett burner which includes cleancut pump, PSC motor, and solid state controls. Factory pre-wired, pre-assembled and tested. Ready to connect to fuel supply line.
- **Barometric Draft Control** – Included with all models.
- **Heat Exchanger** – Proven heat exchanger design featuring 100% welded construction for maximum performance. Large, accessible heat exchanger clean-out ports.
- **Radiator** – “Wrap-around” type for maximum heat transfer.
- **Variable Speed Blower** – Maximizes air conditioner and heat pump efficiencies. On selected units, SEER ratings up to 16 and HSPF ratings up to 8.5 are ARI listed.
- **Blower Assembly** – Entire unit with motor can be easily removed for servicing.
- **Filters Included in all Models** – Filter and rack packaged with POF models.
- **Insulation** – Spun glass and aluminum foil for “hand cool” cabinet.
- **Access Door** – Easily removed for access to burner and controls. Completely enclosed controls and burner in most units.
- **A.F.U.E.** Ratings up to 84%.

SPECIFICATIONS

High Boy/Horizontal POF1HD Series

Caution - All oil furnaces require proper set-up and installation by a certified oil heat technician.

| Model Number | BTU Input | Heating Capacity BTU/HR | AFUE | Blower Performance CFM Range | Nozzle G.P.H. | Angle of Spray | Filter Size | Ship Wt. |
|--------------|------------|-------------------------|------|------------------------------|---------------|----------------|-------------|----------|
| POF1HD091AVF | 70,000 | 58,000 | 83.0 | 720 - 1870 | 0.50 | 70° A | 16 x 25 | 190 |
| | 91,000 | 73,000 | 81.0 | | 0.65 | 70° A | | |
| | (1)98,000 | 19,000 | 80.5 | | 0.70 | 70° A | | |
| POF1HD140AVF | 105,000 | 87,700 | 83.5 | 720 - 1870 | 0.75 | 70° A | 16 x 25 | 270 |
| | 119,000 | 98,800 | 83.0 | | 0.85 | 70° A | | |
| | (1)140,000 | 113,400 | 81.0 | | 1.00 | 70° A | | |

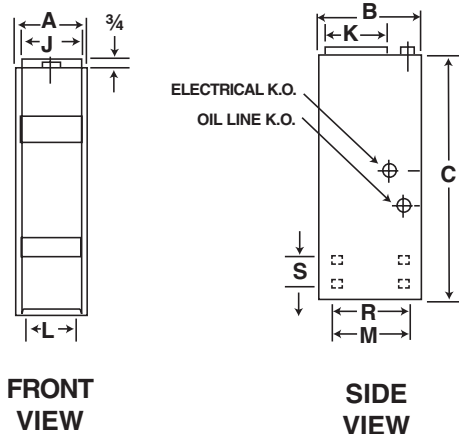
(1) Factory setting

| | |
|------------------------|----------------------------|
| Nominal Blower Size | 11 x 10 |
| Maximum Motor HP | 3/4 |
| Motor Type | Programable Variable Speed |
| RPM Range | 300-1300 |
| Cooling CFM Range* | 720-1870 |
| Heating Airflow Range* | 720-1800 |

* Airflow is held constant regardless of external static pressure within the HP and RPM limits of the motor

DIMENSIONS

| Model Number | Cabinet Size | | | Supply Plenum | | Bottom Return | | Side Return Air K.O. | | Diameter of Flue Pipe |
|--------------|--------------|---------|----------|---------------|---------|---------------|---------|----------------------|---------|-----------------------|
| | Width A | Depth B | Height C | Width J | Depth K | Width L | Depth M | Width R | Depth S | |
| POF1HD091AVF | 22 | 31 | 50 1/2 | 20 1/2 | 20 | 14 | 22 | 22 | 14 | 5 |
| POF1HD140AVF | 22 | 31 | 58 1/8 | 20 1/2 | 20 | 14 | 22 | 22 | 14 | 6 |



 **MAYTAG**

Before purchasing this appliance, read important energy cost and efficiency information available from your retailer. Specifications and illustrations subject to change without notice and without incurring obligations.

Maytag is a registered trademark of the Maytag Corporation and is used under license to NORDYNE Inc.

846B-0406 (Replaces 846B-1204)

Printed in U.S.A. (04/06)