

# PROVEN PERFORMANCE NEW MODERN DESIGN

**RTGH Series**  
Condensing Tankless

**RTGH Series**  
Condensing with Outdoor  
Conversion Kit



*These products meet a stringent  
set of our company's internally  
defined sustainability standards<sup>1</sup>*

**[Rheem.com/Tankless](https://www.Rheem.com/Tankless)**

# Performance You Trust in a New

## DELIVERS THE PERFORMANCE HOMEOWNERS WANT

With the same proven performance both plumbers and homeowners trust, the Rheem® RTGH Series Super High Efficiency Condensing Tankless Water Heaters now offer a new modern design. These smaller, lighter units were designed with contractors in mind to make one-person installation and servicing even easier while saving the homeowner money and energy. Plus, enhanced features deliver the continuous hot water and energy efficiency homeowners want.



## EARTH-FRIENDLY EFFICIENCY, FLEXIBLE INSTALLATION

### High Efficiency Performance

- Up to 1.5X the efficiency of a standard 50-gallon gas tank<sup>2</sup> – .93 UEF for condensing
- Up to 2.5X the lifespan of a standard 50-gallon gas tank<sup>2</sup> – With the industry's most comprehensive 15-year warranty<sup>3</sup>

### Flexible Upgrade

- Industry-best ½" side-to-side and front clearance to combustibles<sup>6</sup> – Provides peace of mind to install in a closet and close the door
- Easy-hang front door – Slides down and hangs for easier servicing
- Faster servicing – A Phillips screwdriver is all that's needed to disassemble the unit

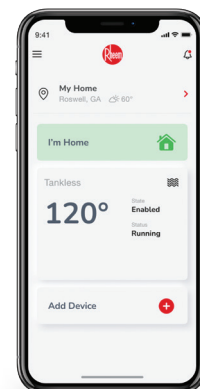
### Smarter Solution

Built-in Wi-Fi powered by EcoNet® technology lets homeowners control Rheem® RTGH Series Tankless Water Heaters from their smart phone<sup>7</sup>

- Receive notifications, maintenance reminders and LeakGuard™ leak detection alerts
- Set temperature, change modes, and access energy and water usage reports

### Sustainable Solution

- Reduces carbon footprint and energy usage – The RTGH Series uses up to 34% less energy<sup>4</sup> than a standard 50-gallon tank helping minimize environmental impact
- Reduces greenhouse gas NOx emissions by up to 65%<sup>5</sup> – Improving air quality

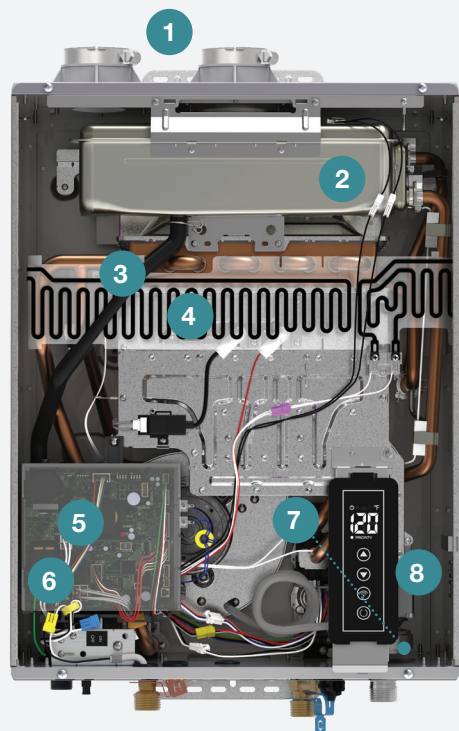


# Modern Design



## Rheem® RTGH Series Super High Efficiency Condensing Tankless

- **Simplified model selection** – Single unit meets almost any installation need with available outdoor conversion kit
- **Best-in-class turn down ratio** – Achieve tighter control over temperature output even during lower demand



- 1 2" inlet & exhaust w/band connections**
- 2 Secondary stainless steel heat exchanger**
- 3 Primary copper heat exchanger**
- 4 Exclusive overheat film wrap**  
Protects the unit
- 5 Exclusive Hot Start Programming™**  
Minimizes cold water bursts<sup>9</sup>
- 6 Exclusive water saving feature**  
Saves water
- 7 LeakGuard™ with auto shut-off valve<sup>8</sup>**  
Detects leaks and shuts off the flow of water
- 8 Built-in Wi-Fi powered by EcoNet® technology**  
Easy-to-use controls (select models)



### Outdoor Conversion Kit RTGH-X\*

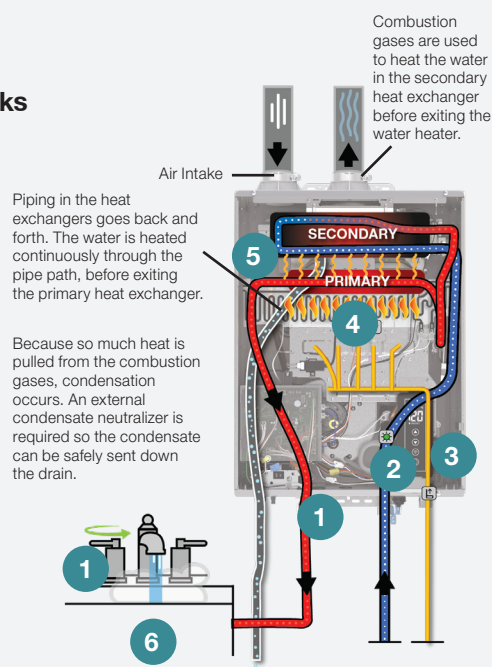
Enables RTGH installation outdoors  
(sold separately)



*\*When converting indoor Wi-Fi with LeakGuard models to outdoor, included cable and indoor mount should be used. This cable disables LeakGuard in outdoor installations to avoid false alarms and shut-off. Reference outdoor conversion instructions for more information on cable installation.*

## How a Rheem® RTGH Series Condensing Tankless Gas Water Heater Works

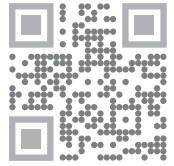
- 1** A hot water faucet is opened, starting the water flow.
- 2** Cold water entering the unit passes over the flow sensor activating the water heater (minimum activation flow rate .4 GPM). The water then flows into the secondary heat exchanger followed by the primary.
- 3** The gas valve opens and sends gas to the heat exchangers.
- 4** Ignitors in the unit spark and gas is burned to heat the water.
- 5** Heat from the flame transfers to the water in the primary heat exchanger. Remaining heat from combustion exhaust gases transfers to water in the secondary heat exchanger.
- 6** After passing through the temperature sensor, hot water exits the water heater at set point and travels to the open faucet. Once the faucet is closed, the flow sensor stops detecting the flow. The exclusive Hot Start Programming™ keeps the water heater in a ready state for five minutes minimizing cold-water bursts between back-to-back usage.





# HELP YOUR CUSTOMERS START SAVING TODAY

Learn more at [Rheem.com/Tankless](https://Rheem.com/Tankless)  
or ask your local distributor



## Rheem® RTGH Series Tankless Specifications

Model Number		RTGH-68DVLN-3	RTGH-84DVLN-3	RTGH-90DVLN-3	RTGH-95DVLN-3	RTGH-95DVELN-3
Installation Type		Indoor (Outdoor Conversion Kit sold separately: RTGH-X)				
Gas Input Rate	MAX	120,000 BTU/h	157,000 BTU/h	180,000 BTU/h	199,900 BTU/h	
	MIN	11,000 BTU/h	11,000 BTU/h	11,000 BTU/h	11,000 BTU/h	
Built-in LeakGuard™						✓
Wi-Fi						✓
Uniform Energy Factor (UEF)		0.90	0.93			
Gallons Per Minute (GPM)	MAX (35°F)	6.6	8.4	9.0	9.5	
	45°F Rise	5.1	6.7	7.7	8.5	
	67°F Rise	3.4	4.6	5.2	5.7	
Number of Bathrooms		2.5	3	3–4	4	
Temp. Range		100–140°F				
Height		23.7"				
Width		17.7"				
Depth		9.8"				
Weight (Lbs.)		52.9				
Temp. Setting from Factory		120°F				
Heat Exchanger Material		Primary: Copper – Secondary: Stainless Steel				
Minimum Activation Flow		0.4 GPM				
Minimum Continuous Flow		0.26 GPM				
Maximum Altitude		7,800 ft.				
Ultra Low NOx		Meets 14 ng/J NOx requirements – SCAQMD Rule 1146.2 compliant				
Warranty		15-Year Heat Exchanger   5-Year Parts   1-Year Labor				

All models are available in Natural Gas or Propane (LP). For Propane replace the N with P for LP model.

## CONTACT US

**Customer Service,  
Warranty and Parts:**  
800.621.5622

**Technical Service:**  
800.HEATER3  
(800.432.8373)

**EcoNet® Support:**  
800.255.2388

**Plumber Support  
Group:**  
866.339.2388



<sup>1</sup>Sustainability Standouts are Wi-Fi models only. <sup>2</sup>Based on comparison of a Rheem RTGH Series model against a standard residential 50-gallon tank type model with like fuel type. <sup>3</sup>Based on comparison of Rheem RTGH series models against similar models from leading tankless competitors. <sup>4</sup>Based on reduction in energy usage of Rheem RTGH Series models with a 0.93 UEF compared to a standard residential atmospheric 50-gallon tank type model with a 0.61 UEF. Assumes like fuel type, not to exceed 75,000 BTU. <sup>5</sup>Based on comparison of Rheem RTGH Series model against standard residential 50-gallon tank type model with like fuel type, not to exceed 75,000 BTU. <sup>6</sup>Based on comparison of Rheem RTGH Series models against similar models from leading tankless brands. <sup>7</sup>Applies only to models with Wi-Fi; Wi-Fi broadband connection and EcoNet® App required; notifications are dependent on external factors beyond Rheem's control. <sup>8</sup>Available on indoor Wi-Fi models only. When converting indoor Wi-Fi with LeakGuard models to outdoor, included cable and indoor mount should be used. This cable disables LeakGuard in outdoor installations to avoid false alarms and shut-off. Reference outdoor conversion instructions for more information on cable installation. <sup>9</sup>Based on a comparison of Rheem RTGH Series models having the Hot Start Programming™ against consumer reviews of leading competitor models.

In keeping with its policy of continuous progress and product improvement, Rheem reserves the right to make changes without notice.

Printed in the USA • QG • Form No. 08.25-RH-RTGH-3-BRO

© 2025 Rheem Manufacturing Company. Rheem trademarks owned by Rheem Manufacturing Company.