



# TANKLESS

## WATER HEATER ACCESSORIES

# ALL ABOUT PROTECH<sup>®</sup> OEM AIR & WATER PARTS

ProTech<sup>®</sup> is the official OEM replacement part brand for Rheem<sup>®</sup> Manufacturing and its global family of HVACR and water heater equipment brands.

Using ProTech OEM air and water parts helps protect your investment and maintain your equipment's warranty.

## WHY CHOOSE PROTECH?

Choosing ProTech means choosing confidence. Every part is designed to meet the same standards as the original components ensuring:



### SERVICE

Easy, accurate installation for faster repairs and fewer callbacks



### RELIABILITY

Factory approved parts built to last and maintain your warranty



### PERFORMANCE

Engineered for peak efficiency and optimal system output



### SAFETY

Tested for compatibility to maintain system safety and integrity

## BACKING OF RPD<sup>™</sup> | RHEEM<sup>®</sup> PARTS DIVISION



Rheem Manufacturing's reputation as a leader in the HVACR and water heater industry, along with their extensive global family of brands, allow RPD | Rheem Parts Division direct access to the original components of the equipment you trust.

At RPD, we are the replacement parts experts. RPD serves as the premiere source for all things air and water heater related service parts. With strategic distribution centers, RPD delivers reliable resources and parts across the nation and Canada.

## GENUINE FACTORY AUTHORIZED PARTS<sup>™</sup>

When you see the Genuine Factory Authorized Parts stamp, you can trust these parts are rigorously tested and approved by Rheem to ensure exact fit, reliable function and lasting performance with your equipment.

Get the reliability, performance and peace of mind that only true factory-tested replacements can provide.



As part of the Rheem<sup>®</sup> Family of Brands,  
ProTech<sup>®</sup> parts are specifically designed for unmatched reliability





# Venting



Venting is a crucial portion of install and operation of your tankless water heater. Made from durable and long-lasting materials, our ProTech OEM venting systems allow safe and reliable operation of your condensing and non-condensing tankless units.

## IKONIC®



The Rheem IKONIC® Condensing Tankless Water Heaters make it easy to go tankless by providing continuous hot water, energy savings and the industry’s most comprehensive warranty. Plus, exclusive built-in features and rebate eligibility help keep upfront costs down.

With Rheem IKONIC, you’ll enjoy the comfort and convenience of continuous hot water while saving energy and money from the brand you trust.

## SUPER HIGH EFFICIENCY (CONDENSING) VENTING

ProTech venting offers a clean installation of the intake and exhaust pipes of the condensing tankless water heater.

Part Number	Description	Model Compatibility
SP21091	2" Flex Vent Kit	IKONIC
SP21069E	Low Profile Horizontal Termination Kit for 3" PVC	IKONIC
SP21069G	Low Profile Horizontal Termination Kit for 2" PVC	IKONIC
SP20286	Low Profile Horizontal Termination Kit for 3" PVC	RTGH
SP20285	Low Profile Horizontal Termination Kit for 2" PVC	RTGH
180-145	Low Profile Horizontal Termination Kit for 2" PVC	Thermaforce®
AS43845-1	PVC 90 elbow with wind vane and vent screen	All Condensing: RTGH, IKONIC, Thermaforce
SP20245	3" Horizontal or Vertical Concentric Vent Termination	All Condensing: RTGH, IKONIC, Thermaforce
SP20897	2" Horizontal or Vertical Concentric Vent Termination	All Condensing: RTGH, IKONIC, Thermaforce
SP20252	3" Condensation Collar	All Condensing: RTGH, IKONIC, Thermaforce
SP20787	2" Condensation Collar	All Condensing: RTGH, IKONIC, Thermaforce

Simplify your tank-to-tankless conversion with the Flex Vent Kit (SP21091). Designed for IKONIC models, this kit uses your existing 3” or 4” B-vent as a chase for a flexible 2” polypropylene exhaust vent, eliminating the need for major modifications. With a 50’ vent length included, it saves time, reduces installation complexity, and makes upgrades easier and more efficient.

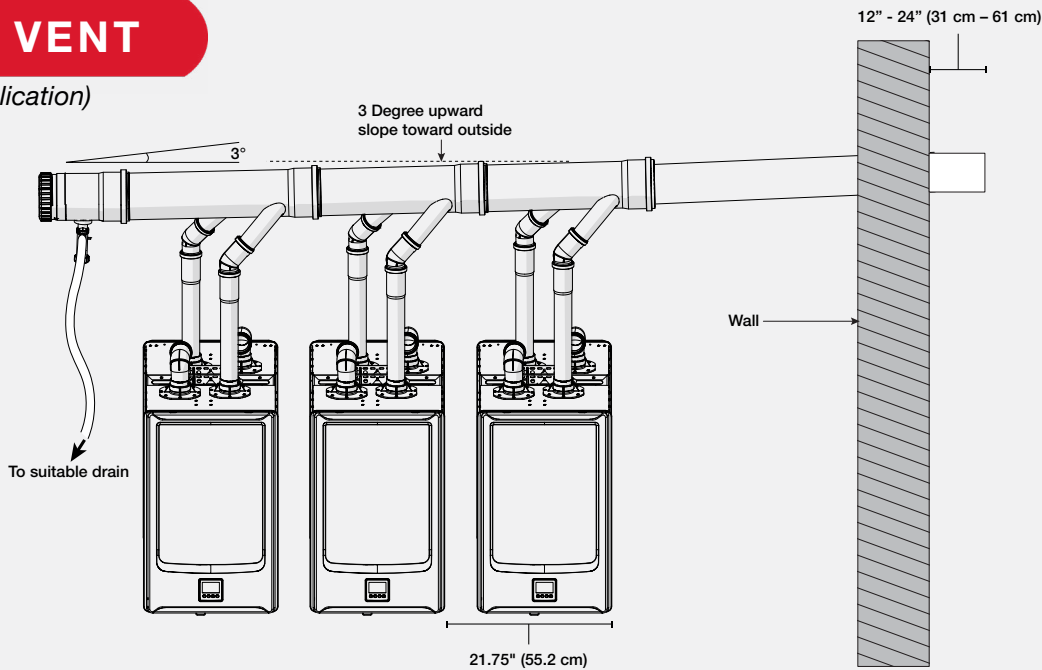


IKONIC / IKONIC COMMERCIAL COMMON VENTING

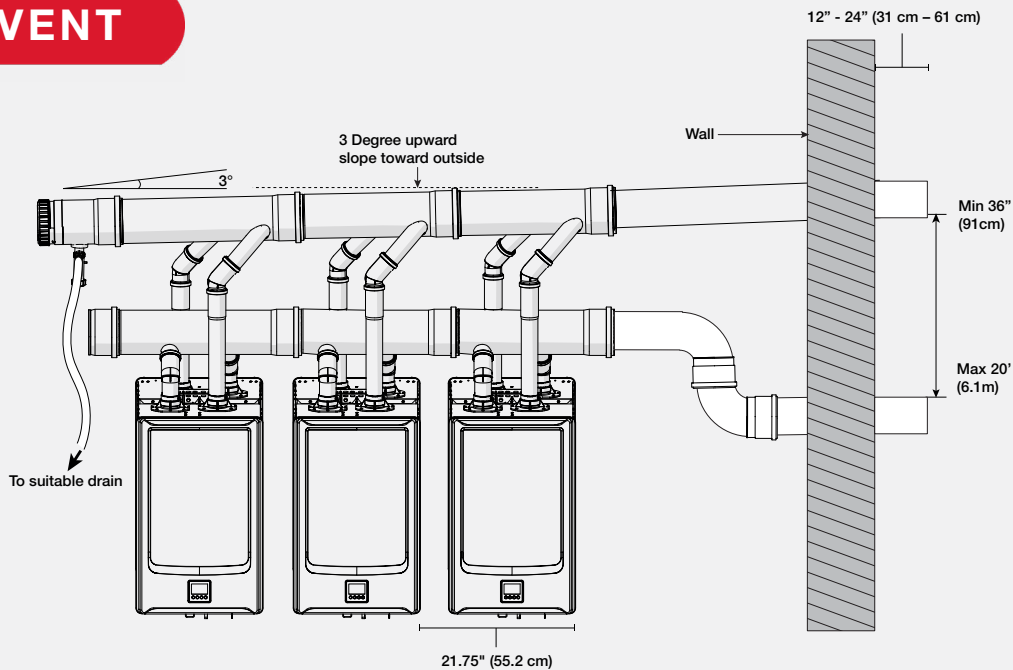
Back-to-Back Installations

POWER VENT

(Room Air Application)



DIRECT VENT



Starter and Extension Inline Header Kits

Kit Part # (6" Only)	Orientation	Description	Vent Direction
RTG20351A	Back-to-Back	Starter	Exhaust
RTG20352A	Back-to-Back	Extension	Exhaust
RTG20351B	Back-to-Back	Starter	Intake
RTG20352B	Back-to-Back	Extension	Intake

Kit Contents:

RTG20351A - 6" Back-to-Back Starter Exhaust Kit

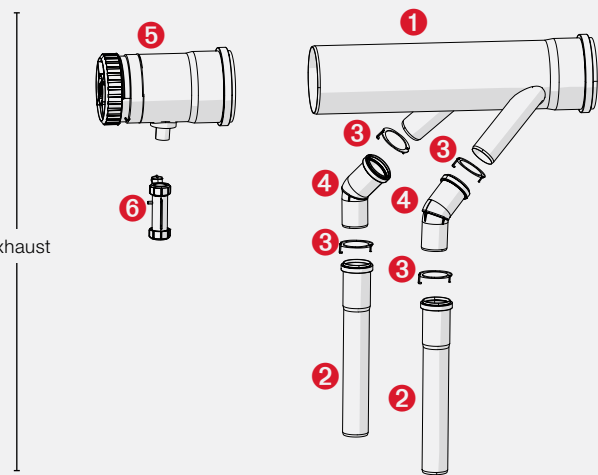
Reference Number	Part Number	Qty	Description
1	RTG20350A	1	6" Back-to-Back Exhaust Branch Tee
Not Shown	SP20918AW	1	6" Support Clamp
Not Shown	SP20918H	1	Centrocerin (50 ml)
2	RTG20360	2	2" Straight Pipe, 1'
3	SP21092G	4	2" Connector Ring
4	RTG20359	2	2", 45 Degree Elbow
5	SP20918AG	1	6" Horizontal Drain Fitting
6	SP20918C	1	Universal Ball Valve Siphon

RTG20351B - 6" Back-to-Back Starter Intake Kit

Reference Number	Part Number	Qty	Description
7	RTG20350B	1	6" Back-to-Back Intake Branch Tee
Not Shown	SP20918AW	1	6" Support Clamp
Not Shown	SP20918H	1	Centrocerin (50 ml)
4	RTG20359	2	2", 45 Degree Elbow
8	SP20918AH	1	6" Tee Cap

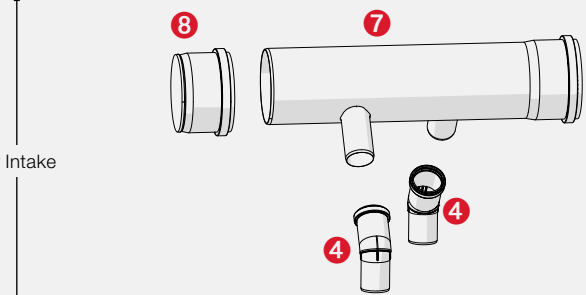
RTG20352A - 6" Back-to-Back Extension Exhaust Kit

Reference Number	Part Number	Qty	Description
1	RTG20350A	1	6" Back-to-Back Exhaust Branch Tee
Not Shown	SP20918AW	1	6" Support Clamp
2	RTG20361	2	2", Straight Pipe, 2'
3	SP21092G	4	2" Connector Ring
4	RTG20359	2	2", 45 Degree Elbow



Exhaust

Air Intake



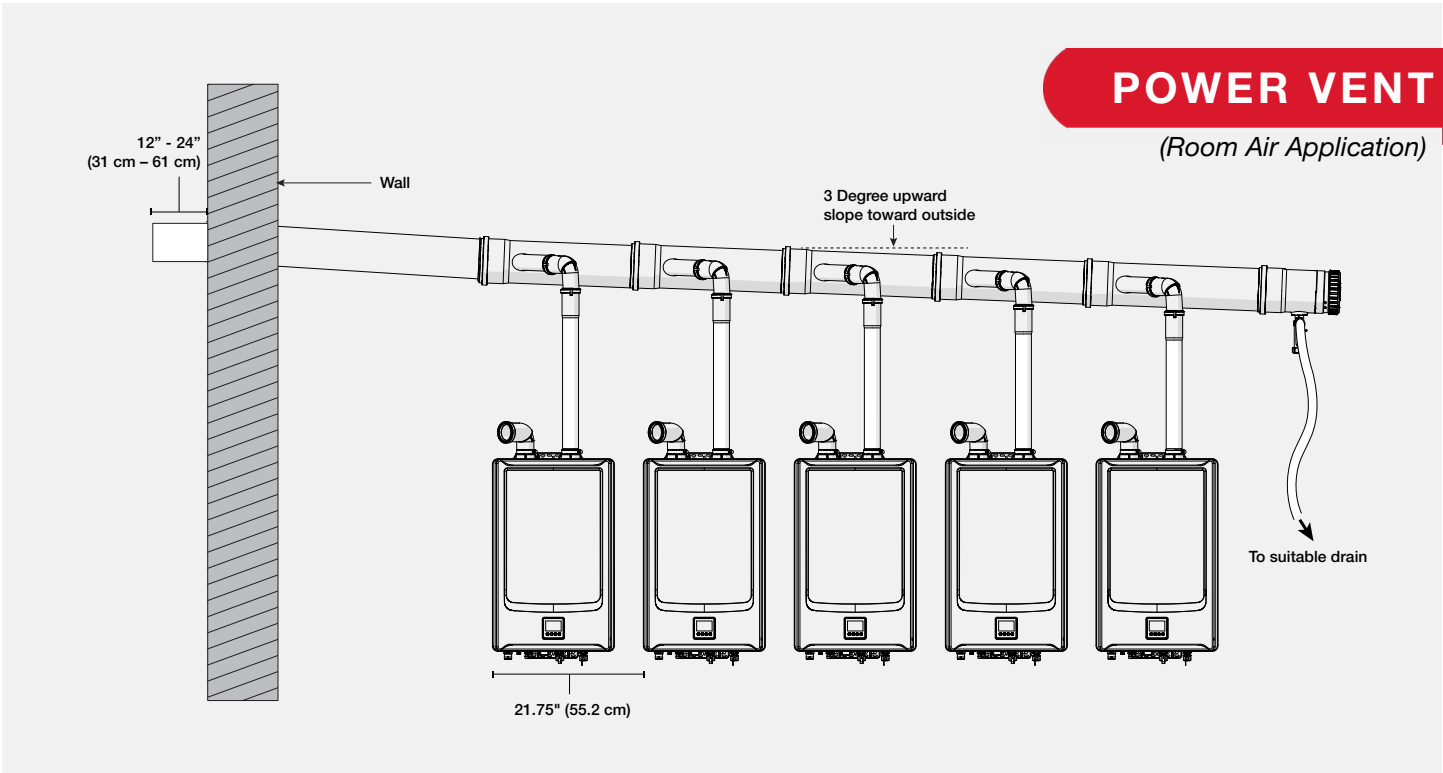
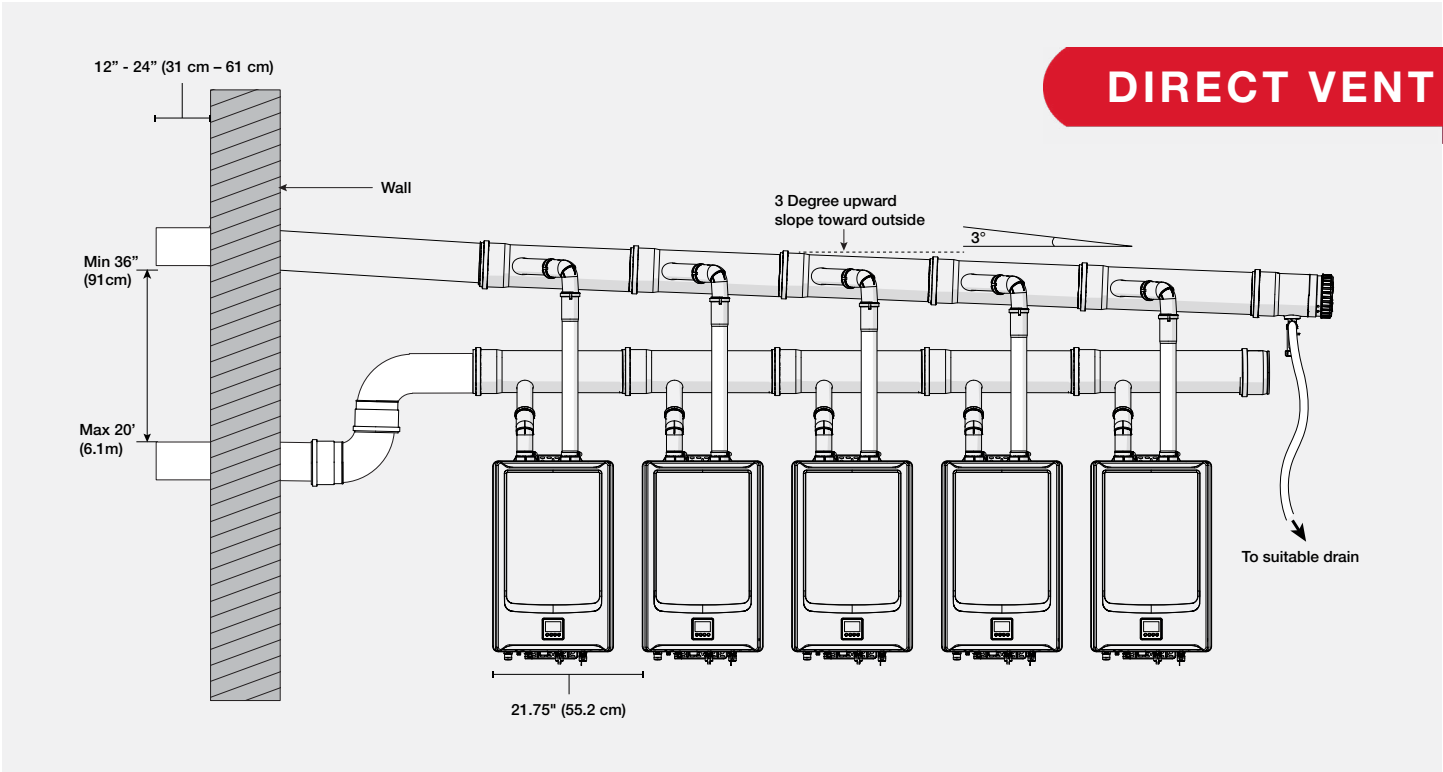
RTG20352B - 6" Back-to-Back Extension Intake Kit

Reference Number	Part Number	Qty	Description
7	RTG20350B	1	6" Back-to-Back Intake Branch Tee
Not Shown	SP20918AW	1	6" Support Clamp
4	RTG20359	2	2", 45 Degree Elbow



IKONIC / IKONIC COMMERCIAL COMMON VENTING

Inline Installations



Starter and Extension Inline Header Kits

Kit Part # (6" Only)	Orientation	Description	Vent Direction
RTG20353A	Inline	Starter	Exhaust
RTG20354A	Inline	Extension	Exhaust
RTG20353B	Inline	Starter	Intake
RTG20354B	Inline	Extension	Intake

Kit Contents:

RTG20353A - 6" Inline Starter Exhaust Kit

Reference Number	Part Number	Qty	Description
1	RTG20350C	2	6" Inline Exhaust Branch Tee
Not Shown	SP20918AW	1	6" Support Clamp
Not Shown	SP20918H	1	Centrocerin (50 ml)
2	RTG20361	2	2", Straight Pipe, 2'
3	SP21092G	4	2" Connector Ring
4	RTG20365	2	2", 87 Degree Elbow
5	SP20918AG	1	6" Horizontal Drain Fitting
6	SP20918C	1	Universal Ball Valve Siphon

RTG20353B - 6" Inline Starter Intake Kit

Reference Number	Part Number	Qty	Description
1	RTG20350C	2	6" Inline Exhaust Branch Tee
Not Shown	SP20918AW	1	6" Support Clamp
Not Shown	SP20918H	1	Centrocerin (50 ml)
8	RTG20359	2	2", 45 Degree Elbow
9	SP20918AH	1	6" Tee Cap

RTG20354A - 6" Inline Extension Exhaust Kit

Reference Number	Part Number	Qty	Description
1	RTG20350C	1	6" Inline Exhaust Branch Tee
Not Shown	SP20918AW	1	6" Support Clamp
Not Shown	RTG20362	1	2" Straight Pipe, 3'
3	SP21092G	2	2" Connector Ring
4	RTG20365	1	2", 87 Degree Elbow

RTG20354B - 6" Inline Extension Intake Kit

Reference Number	Part Number	Qty	Description
7	RTG20350D	1	6" Inline Intake Branch Tee
Not Shown	SP20918AW	1	6" Support Clamp
8	RTG20359	1	2", 45 Degree Elbow

Exhaust

Air Intake

HIGH EFFICIENCY (NON-CONDENSING) VENTING

Featuring durable stainless steel construction and an updated 90-degree elbow for ease of installation and maintenance, our product offerings provide a consistent, high-quality venting solution for all Rheem Family Tankless Gas indoor installations.

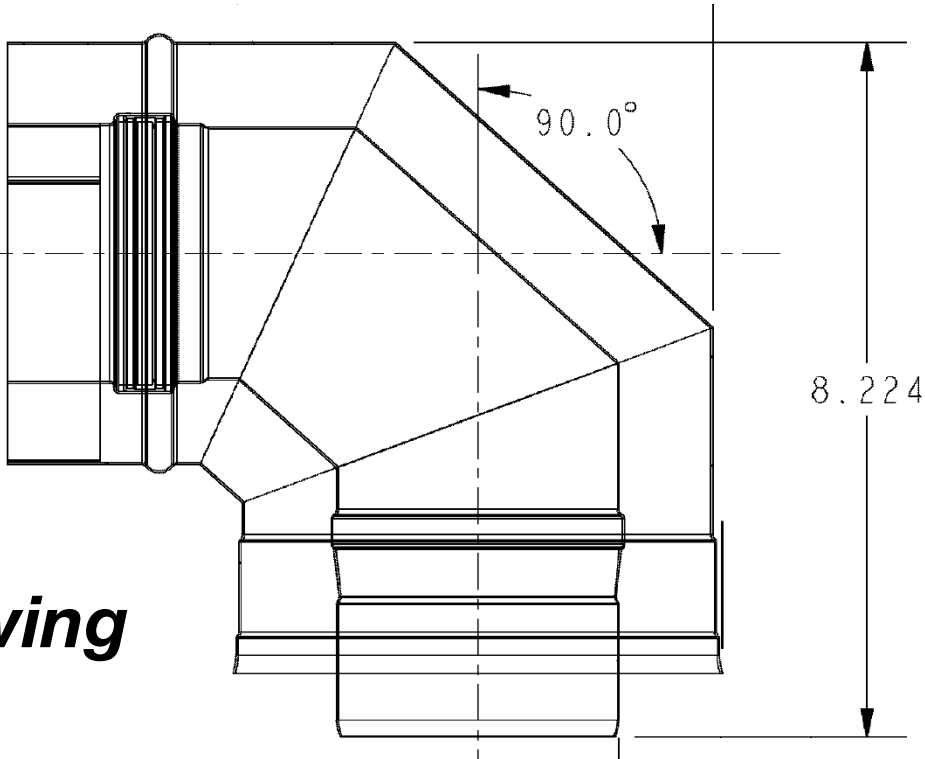
TERMINATION KITS | 3"/5" Stainless Steel Concentric Vent Termination Kits

RTG20281-1	RTG20291-1	RTG20292-1	RTG20293-1	RTG20280-1	RTG20282
<b>Low-Profile Horizontal Vent Termination Kit</b> Contains: 90-Degree Elbow, Low-Profile Cone Termination, Trim Ring, Screws All kits can be extended				<b>Low-Profile Horizontal Vent Termination Kit</b> Contains: 90-Degree Elbow, Low-Profile Cone Termination, Trim Ring, Screws. All kits can be extended	<b>Vertical Vent Termination Kit</b> Contains: Storm Collar, 6/12 to 12/12 Pitched Cone Flashing, Vertical Termination with Rain Cap. Does not include vertical vent pipe
For 2" x 4" Wall with 1-1/2" Siding For up to 6" Walls	For 2" x 6" Wall with 1-1/2" Siding For up to 8" Walls	For up to 10" Walls	For up to 12" Walls		



90° Elbow  
and Line Drawing

RTG20271



TERMINATION ACCESSORIES | 3"/5" Stainless Steel Concentric Vent Termination Parts

RTG20274A	RTG20274B	RTG20274C	RTG20274D	RTG20273	RTG20275
<b>Low-Profile Horizontal Cone Terminations</b> Contains: Low-Profile Cone Termination and Trim Ring only				<b>Concentric Horizontal Termination</b> For up to 8" walls	<b>Vertical Cap Termination</b> 12" overall height
For up to 4" Walls	For up to 6" Walls	For up to 8" Walls	For up to 10" Walls		

OTHER VENTING ACCESSORIES | 3"/5" Stainless Steel Concentric Venting

RTG20270A	RTG20270B	RTG20270C	RTG20270D	RTG20320	RTG20271	RTG20321
<b>6" Vent Length</b> 5.66" overall length	<b>12" Vent Length</b> 11.66" overall length	<b>24" Vent Length</b> 23.66" overall length	<b>36" Vent Length</b> 35.66" overall length	<b>Adjustable Vent Length</b> 13" to 20" overall length	<b>90-Degree Elbow</b> 8.1" rise – 8.1" run	<b>45-Degree Elbow</b> 8.6" rise – 3" run

OTHER VENTING ACCESSORIES | Optional Components to Complete the Job

RTG20279	RTG20277	RTG20276	RTG20283	RTG20278
<b>Stucco Wall Thimble</b> 17" Wide - 12" Tall. Up to 6" deep wall with Drywall and Stucco Rings	<b>Storm Collar</b> Split ring galvanized	<b>6/12 to 12/12 Roof Flashing</b> 15" square base galvanized	<b>Silicone Condensate Drain Tube Kit</b> 6' high temp tube, 2 clamps, 2 wire ties, instructions	<b>Trim Plate</b>



# Installation & Service



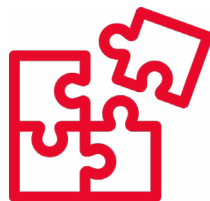
Get everything you need for a reliable and efficient tankless water heater setup. Our comprehensive selection of parts and accessories range from recess boxes and pipe covers, to pressure relief valves and essential installation components.



Support long-term performance



Simplified installation and maintenance



OEM parts ensure exact fit and function

## VALVES

Tankless Service Valves allow for easy maintenance and service, such as flushing, for any tankless water heater. Pressure Relief Valve provides protection against excessive water pressure.



RTG20326

Part Number	Description	Model Compatibility
RTG20326 *	Edison Service Valves & Pressure Relief Valve Kit	All Tankless
AP12993C	Watts Pressure Relief Valve	

*\*This is considered an aftermarket part.*

## FLUSH KIT

Connects easily to tankless service valves for flushing the heat exchanger with white vinegar. Simple to use. Recommended flushing every 500 hours of use (1 to 1-1/2 years).



RTG20124

Part Number	Description	Model Compatibility
RTG20124 *	Flush Kit	All Tankless

*\*This is considered an aftermarket part.*

## WATER TREATMENT

Combat hard water and scale build-up. Unit features a clear housing allowing you to see when it's time to replace the cartridge.

AllClear® water treatment prevents scale build up and reduces need to flush the tankless water heater, improving efficiency and extending the life of the unit.



RTG20251

Part Number	Description	Model Compatibility
RTG20251	AllClear Water Treatment System	All Tankless
RTG20252	AllClear Replacement Cartridge	All Tankless



CONDENSATE MANAGEMENT

Condensing tankless water heaters produce condensate that must be neutralized for safe disposal. Also required for condensate produced in common venting in Commercial Tankless applications.



Part Number	Description	Model Compatibility
RTG20329AR	External Condensate Neutralizer Accessory	All Condensing: RTGH, IKONIC, Thermaforce
RTG20329AS	Replacement Media Kit	All Condensing: RTGH, IKONIC, Thermaforce
RTG20372	Multi-Unit Condensate Neutralizer	All Condensing: RTGH, IKONIC, Thermaforce

RECESS BOXES

Enhance an outdoor installation by protecting the tankless unit from damage, tampering and weather. All recess boxes have a grey finish to match the tankless heater.



Part Number	Description	Model Compatibility
RTG20329AU	Recess Box Assy - Condensing Outdoor	RTGH
RTG20330AK	Recess Box Assy - Non-Condensing Outdoor	RTG

OUTDOOR CONVERSION KIT

Designed to easily convert our condensing gas water heaters (select models) for outdoor installations, outdoor conversions kit include a grey finish to match the tankless heater.



Part Number	Description	Model Compatibility
RTGH-SX*	Outdoor Conversion Kit	IKONIC
RTGH-X*	Outdoor Conversion Kit	RTGH

\*This part is fulfilled through Rheem Water Heating Division. Not stocked at RPD.

PIPE COVERS

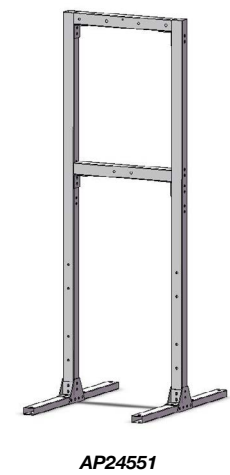
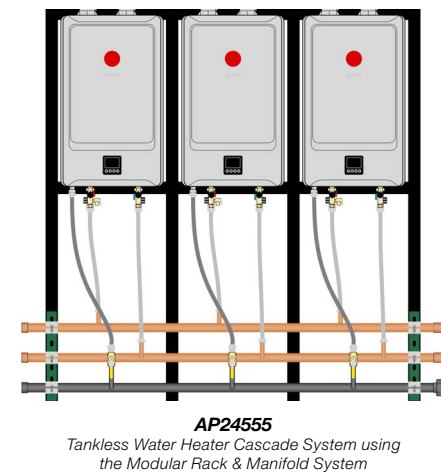
Enhance an indoor or outdoor installation by concealing the piping beneath the water heater while protecting from tampering and weather conditions. All pipe covers have a grey finish to match the tankless heater.



Part Number	Description	Model Compatibility
RTG20322	Pipe Cover - Condensing with Recirculation	IKONIC
RTG20329AT	Condensing Pipe Cover Assembly	RTGH
RTG20330AJ	Non-Condensing Pipe Cover Assembly	RTG (Outdoor Only)

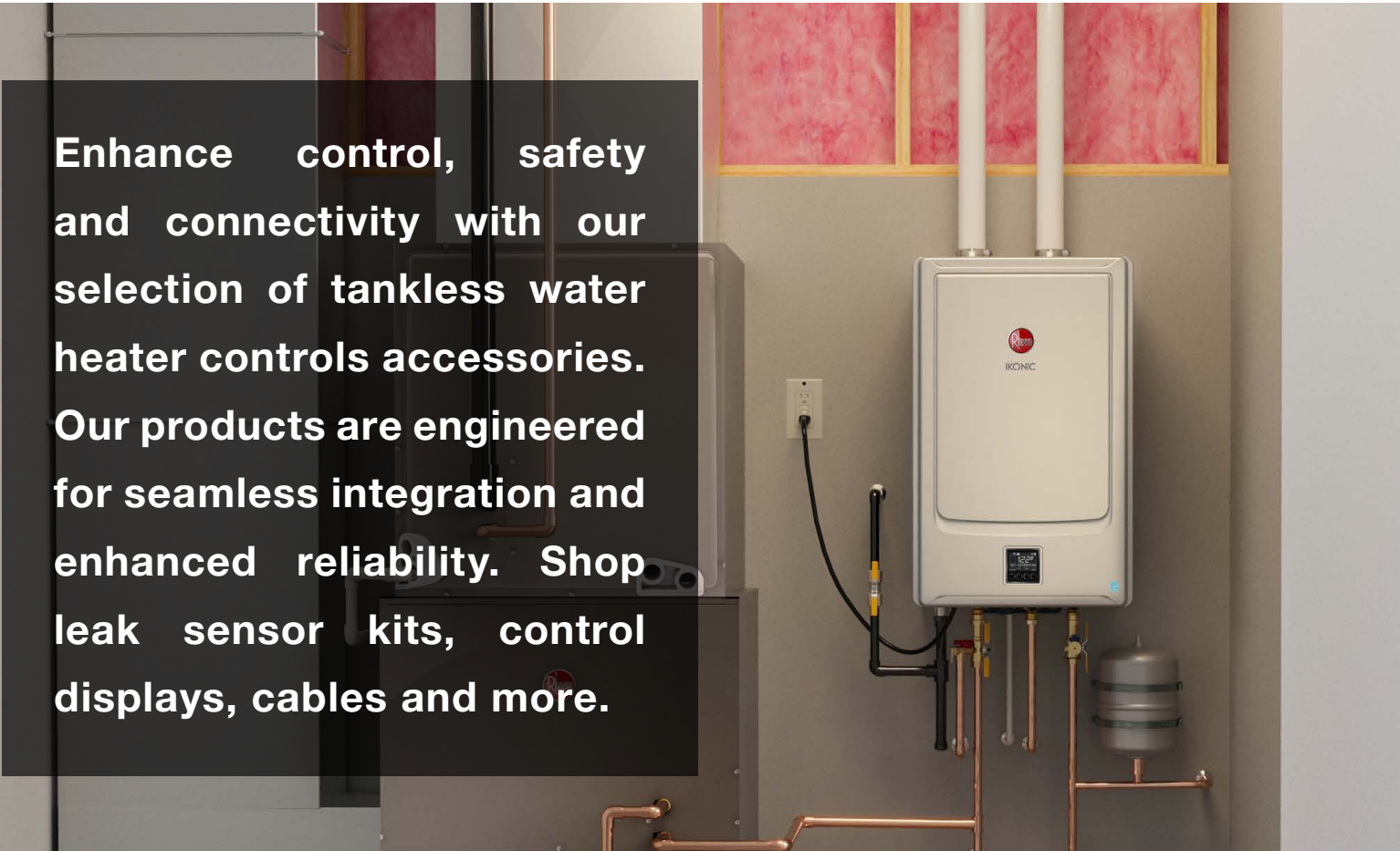
MOUNTING

The flexible rack system is expandable to hold up to 20 units (with multiple racks) and can be used in three configurations: wall mounted or free standing side to side or back to back.



Part Number	Description	Model Compatibility
AP24551	Modular Rack - Primary	IKONIC, Thermaforce
AP24552	Modular Rack - Add-On	IKONIC, Thermaforce
AP24553	Modular Rack Manifold Kit (4BB)	IKONIC, Thermaforce
AP24554	Modular Rack Manifold Kit (4SS)	IKONIC, Thermaforce
AP24555	Modular Rack Manifold Kit (3SS)	IKONIC, Thermaforce
AP24556	Modular Rack Manifold (2BB)	IKONIC, Thermaforce
AP24557	Modular Rack Manifold Kit (2SS)	IKONIC, Thermaforce

Controls & Accessories



RECIRCULATION PUMP KITS

Get faster hot water at the tap by adding a recirculation pump to your tankless or tank water heater system.



Part Number	Description	Model Compatibility
AP17920	Unit-Installed Recirculation Pump Kit – Timer Based	RTG, RTGH, IKONIC S (No Built-In Pump), Thermaforce
RTG20285	Cross Over Valve Kit	AP17920, IKONIC SR (w/ Pump)
AP18403	Under Sink On Demand Recirculation Pump Kit	RTG, RTGH, IKONIC S (No Built-In Pump), Thermaforce
AP18537	Under Sink On Demand Recirculation Pump Kit w/ Connections	RTG, RTGH, IKONIC S (No Built-In Pump), Thermaforce

CONTROLS

Bath Remotes and EcoNet® Connectivity Upgrade Kits

Upgrade your tankless water heater with our selection of accessories, including bath remotes and WiFi upgrade kits. No matter your model, there’s a kit designed to add EcoNet compatibility, giving you the same benefits across all options: easy temperature adjustment, access to maintenance information, remote monitoring, and control through the EcoNet app\*. Enjoy enhanced convenience without replacing your existing system.



Part Number	Description	Model Compatibility
RTG20006DU	USC1-117 Bath Remote Control	RTG, RTGH
RTG20006DV	USC2-117 Second Bath Remote Control	RTG, RTGH
RTG20376	Indoor Tankless WiFi Upgrade Kit	RTG, RTGH (Indoor Only)
RTG20377	Outdoor Tankless WiFi Upgrade Kit	RTG (Outdoor Only), RTGH (Converted to Outdoor)
AP20298	WiFi Display Assembly	IKONIC
RTG20329AL	Leak Sensor Kit	RTG, RTGH-3 (WiFi Models Only)

*\*Applies only to models with Wi-Fi; Wi-Fi broadband connection and EcoNet® App required; notifications are dependent on external factors beyond Rheem’s control.*

ON-DEMAND RECIRCULATION ACTIVATION ACCESSORIES

For use with Demand Pump Kits and IKONIC, RTGH Series and RTG Series Tankless Gas Water Heaters.



Part Number	Description	Model Compatibility
SP20861	Wireless Remote Transmitter	On Demand Pump Kits: AP18403, AP18537
SP20863	Wired Push Button	IKONIC, On Demand Pump Kits: AP18403, AP18537



# MANIFOLD CONTROL SYSTEMS

Allow multiple IKONIC, RTGH Series or RTG Series tankless water heaters to be connected in a manifold. These kits allow multiple heaters to communicate and operate as a single system when one unit is not enough. Models can only manifold within the same platforms (RTG/RTGH/IKONIC).

## IKONIC OR WIFI RTG / RTGH

### Daisy Chain: Connect Up To 32 IKONIC, 6 RTG / RTGH

IKONIC models allow you to link up to 32 units using the daisy chain method. For WiFi-enabled RTG and RTGH models, you can connect up to 6 units using the Daisy Chain Method.



Part Number	Description	Model Compatibility
RCPN-AMP03- 0013111101-0002	72" RJ25 Communication Cable	RTG (WiFi Models Only), RTGH (WiFi Models Only), IKONIC
RCPN-AMP03- 0013111101-0003	48" RJ25 Communication Cable	
RCPN-AMP03- 0013111101-0004	240" RJ25 Communication Cable	

## NON-WIFI RTG / RTGH

### EZ-Link® Connect 2 Non-WiFi Units

Connecting 2 units together requires just one (1) Cable.



Part Number	Description	Model Compatibility
RTG20040	EZ-Link Cable	RTG and RTGH models

### MIC-6: Connect Up To 6 Non-WiFi Units

Connecting up to 6 units together requires one (1) MIC-6 Manifold Controller for the system, plus one (1) Type Q Manifold Control Cable for each tankless unit connected.



Part Number	Description	Model Compatibility
RTG20213A	MIC-6 Manifold Controller System	RTG and RTGH models
RTG20213B	1-ft. MIC Control Cable (Type Q)	RTG and RTGH models
RTG20213C	6-ft. MIC Control Cable (Type Q)	RTG and RTGH models

WIFI

IKONIC

NON-WIFI





RHEEM, RUUD, FRIEDRICH, SURE COMFORT, RUSSELL BY RHEEM, WEATHER KING, RPD, PROTECH, ECONET, IKONIC, THERMAFORCE, ALLCLEAR and EZ-LINK trademarks are owned by Rheem Manufacturing Company. Other trademarks are property of their respective owners.